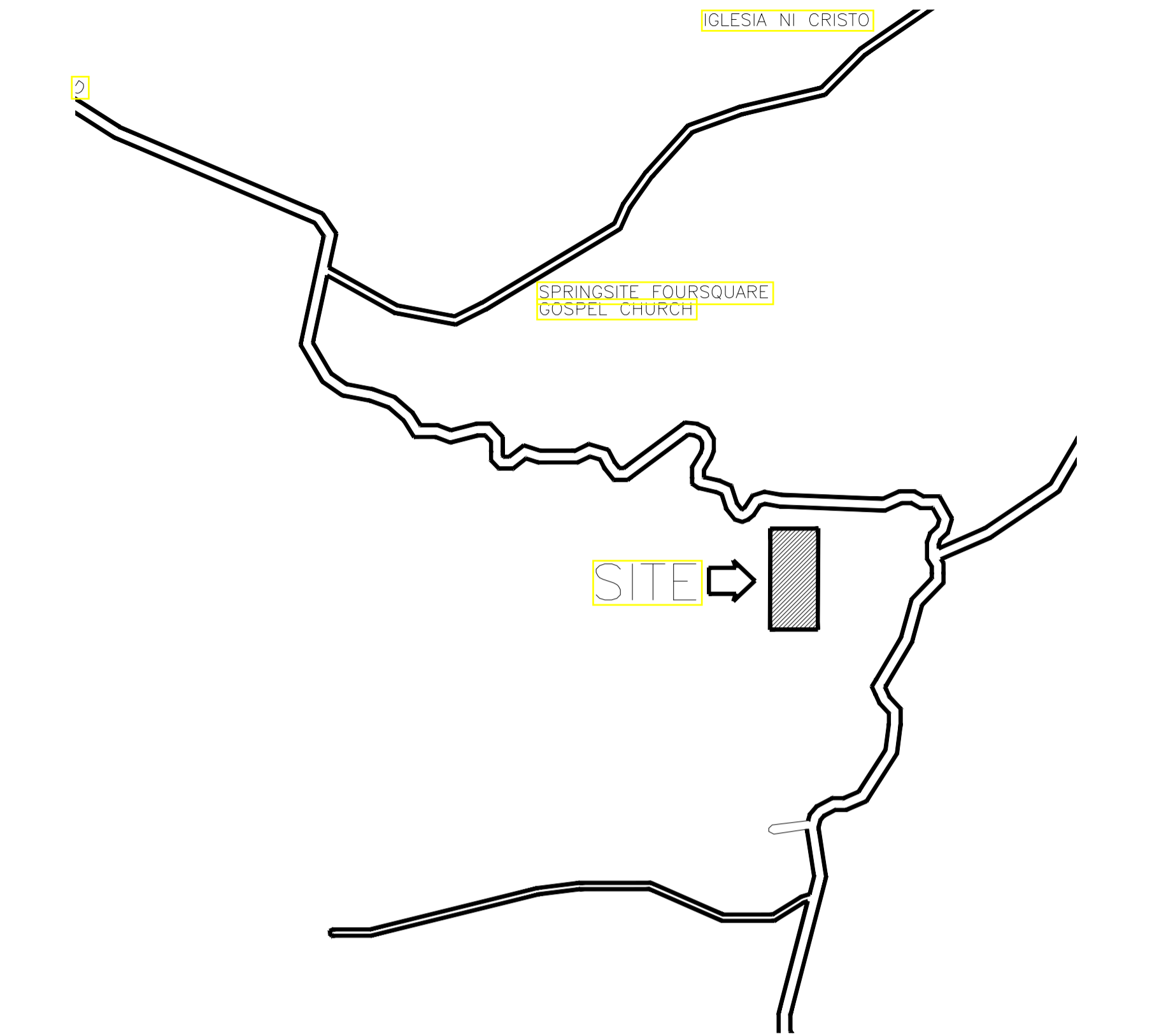
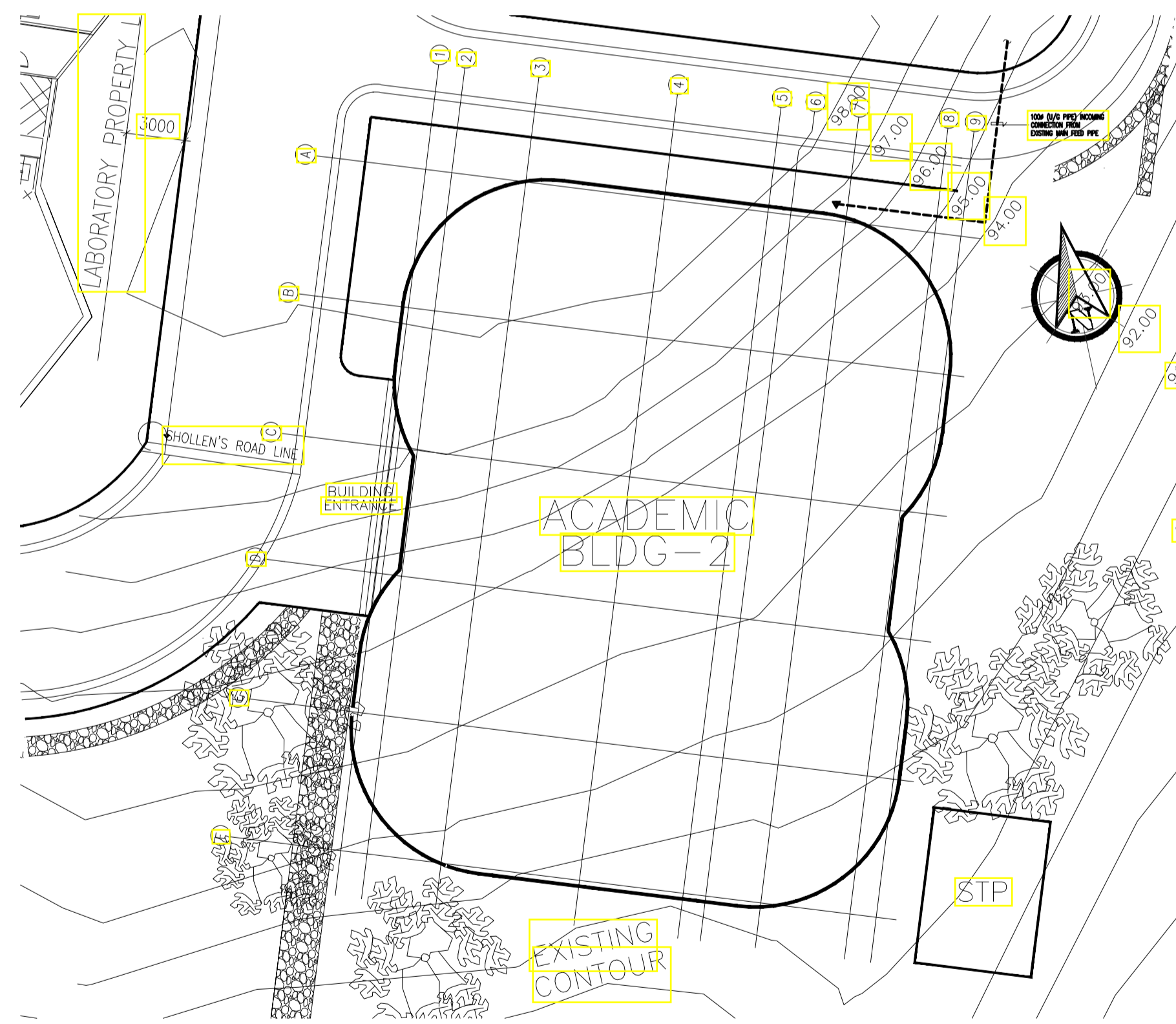


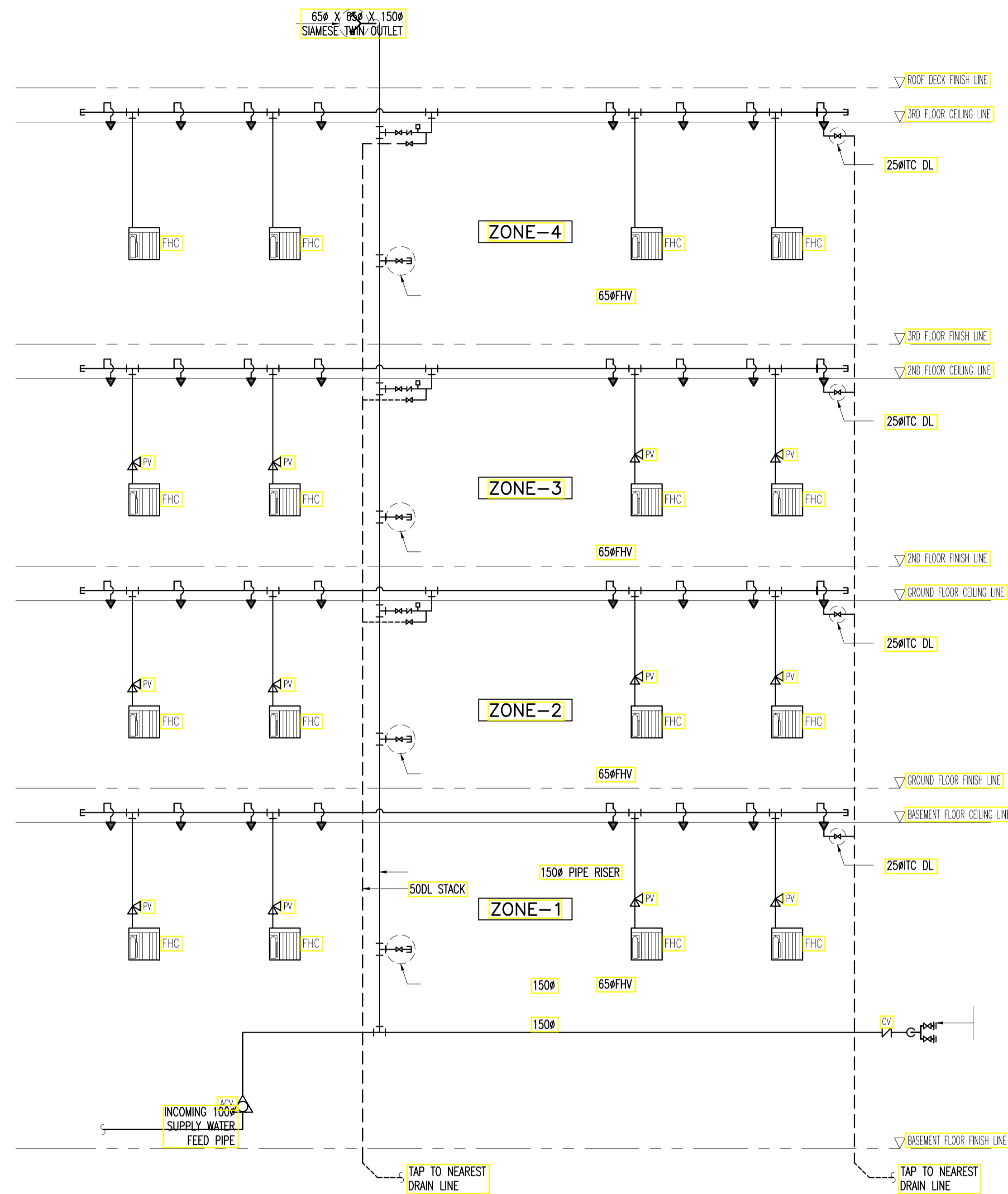
**GENERAL NOTES: FOR REFERENCE ONLY, ALL FIRE-PROTECTION WORKS ARE EXCLUDED IN PHASE 1**



**1 LOCATION MAP**  
FP-01 SCALE NTS



**2 SITE DEVELOPMENT PLAN**  
FP-01 SCALE NTS



**3 AFSS (COMBINED SYSTEM) SCHEMATIC DIAGRAM**  
FP-01 SCALE NTS

**GENERAL NOTES :**

- MOTORS, GENERATORS AND OTHER ELECTRICAL EQUIPMENT SHALL BE PROVIDED WITH NON-COMBUSTIBLE SPLASH PROOF SHIELDS OR HOODS.
- SPRINKLER HEADS SPACED LESS THAN 1.80 M. (6 FT.) SHALL BE PROVIDED WITH BAFFLES OR DEFLECTORS.
- FLOOR DRAINS FOR OIL SPILLS SHALL BE PROVIDED IN FLOOR SLAB FOR TRANSFORMER VAULT, BY PLUMBING CONTRACTOR.
- ALL PORTABLE FIRE EXTINGUISHER (PFE) SHALL BE "ABC" TYPE DRY-CHEMICAL UNLESS OTHERWISE SPECIFIED (INSIDE FIRE HOSE CABINETS.)
- ALL ELECTRICAL, MECHANICAL, AHU ROOMS TO BE PROVIDED WITH 10 LBS. FE-36 TYPE PORTABLE FIRE EXTINGUISHER.
- TRANSFORMER VAULT SHALL BE PROVIDED WITH 1-50 LBS. WHEELED TYPE CO2 PORTABLE FIRE EXTINGUISHER.
- ALL PIPES PASSING THRU BEAMS/GIRDERS SHALL BE PROVIDED WITH PIPE SLEEVES.
- FINAL QUANTITY OF FIRE EXTINGUISHER IS SUBJECT TO APPROVAL OF THE BUREAU OF FIRE PERSONNEL.

**MATERIAL SPECIFICATIONS :**

- FIRE LINES** FIRE LINES SHALL BE BLACK IRON (B.I.) PIPES - SCHEDULE 40 - STANDARD - CONFORMING TO ASTM A-120-1980 "MAYER" OR "SUPREME" BRAND OR APPROVED EQUIVALENT.
- GATE VALVES** SHALL BE OUTSIDE SCREW AND YOKE (OS&Y) TO ASTM B-62 CHECK AND GLOBE VALVES TO ASTM B-62.
- SPRINKLER HEADS** ALL SPRINKLER HEADS, PENDENT (CONCEALED, UPRIGHT & SIDEWALL) SHALL BE RATED 57°C (135°F) TO 74°C (165°F) EXCEPT ON AHU, PUMP, MECHANICAL ROOM & KITCHEN SHALL BE 79°C (175°F) TO 100°C (212°F).

**LEGEND :**

- RECESSED PENDENT TYPE SPRINKLER HEAD
- UPRIGHT SPRINKLER HEAD
- SIDEWALL SPRINKLER HEAD
- SPRINKLER RISER
- DRY STANDPIPE RISER
- DL STACK
- CROSSMAIN OR FEEDMAIN LINE
- (DSP/AFSS) FIRE DEPARTMENT CONNECTION SUPPLY LINE
- FLUSHING CONNECTION
- BRANCH LINE
- RISER NIPPLE
- 2-WAY LONGITUDINAL SWAY BRACE
- 2-WAY LATERAL SWAY BRACE
- 4-WAY RISER SWAY BRACE
- FIRE HOSE VALVE
- HANGER
- FIRE HOSE CABINET
- PIPE SLEEVES
- (10 LBS.) PORTABLE FIRE EXTINGUISHER
- (50 LBS.) PORTABLE FIRE EXTINGUISHER
- WHEELED TYPE
- DRAIN LINE
- INSPECTOR TEST CONNECTION
- DRAIN VALVE
- 2-WAY DSP & AFSS FIRE DEPT. CONNECTION INLET
- 2-WAY SIAMESE TWIN ROOF OUTLET/ ROOF MANIFOLD
- ALARM CHECK VALVE ASSEMBLY
- PRESSURE GAUGE

**ABBREVIATION:**

- ACV ALARM CHECK VALVE
- AFSS AUTOMATIC FIRE SPRINKLER SYSTEM
- CV CHECK VALVE
- DL DRAIN LINE
- DSP DRY STAND PIPE
- DV DRAIN VALVE
- FCV FLOOR CONTROL VALVE
- FHC FIRE HOSE CABINET
- FHV FIRE HOSE VALVE
- GV GATE VALVE
- ITC INSPECTOR TEST CONNECTION
- (OS & Y) GV GATE VALVE (OUTSIDE SCREW & YOKE)
- PFE PORTABLE FIRE EXTINGUISHER
- PG PRESSURE GAUGE
- RN RISER NIPPLE
- WFS WATER FLOW SWITCH

**ENRIQUE O. OLONAN & ASSOCIATES**  
ARCHITECTS ENGINEERS CONSULTANTS  
IN JOINT VENTURE WITH  
**ENRIQUE O. OLONAN & ASSOCIATES, CO.**  
ARCHITECTS ENGINEERS CONSULTANTS

SUITE 305  
XAVIERVILLE SQUARE  
CONDOMINIUM  
NO. 38 XAVIERVILLE  
AVENUE, LONOKA HEIGHTS,  
QUEZON CITY, 1108  
TEL. NOS: 426 7009,  
426 3002/4  
FAX NOS: 927 6608;  
426 7214

DESIGNER:  
**MELITON A. NAGUE**  
PROFESSIONAL MECHANICAL ENGINEER  
PRC No. 4908 Validity: 06/05/2024  
PTR No. 8535022 Date: 01/05/2021  
Place: MAKATI CITY TIN: 912-907-486

REPUBLIC ACT 9266  
DRAWINGS AND SPECIFICATIONS AND OTHER CONTRACT DOCUMENTS DULY SIGNED, STAMPED OR SEALED, AS INSTRUMENTS OF SERVICE, ARE THE INTELLECTUAL PROPERTY AND DOCUMENT OF THE ARCHITECT. WHETHER THE OBJECT FOR WHICH THEY ARE MADE IS EXECUTED OR NOT, IT SHALL BE UNLAWFUL FOR ANY PERSON TO DUPLICATE OR TO MAKE COPIES OF SAID DOCUMENTS FOR USE IN THE REPEITION OF AND FOR OTHER PROJECTS OR BUILDINGS, WHETHER EXECUTED PARTY OR IN WHOLE, WITHOUT THE WRITTEN CONSENT OF ARCHITECT OR AUTHOR OF SAID DOCUMENT.

PROJECT:  
**PROPOSED ACADEMIC BUILDING II / MULTI-PURPOSE GYMNASIUM**  
LOCATION: Brgy. Rizal, Odiangan, Romblon

DESIGNED FOR:  
  
REPUBLIC OF THE PHILIPPINES  
PHILIPPINE SCIENCE HIGH SCHOOL -  
MIMAROPA REGIONAL CAMPUS

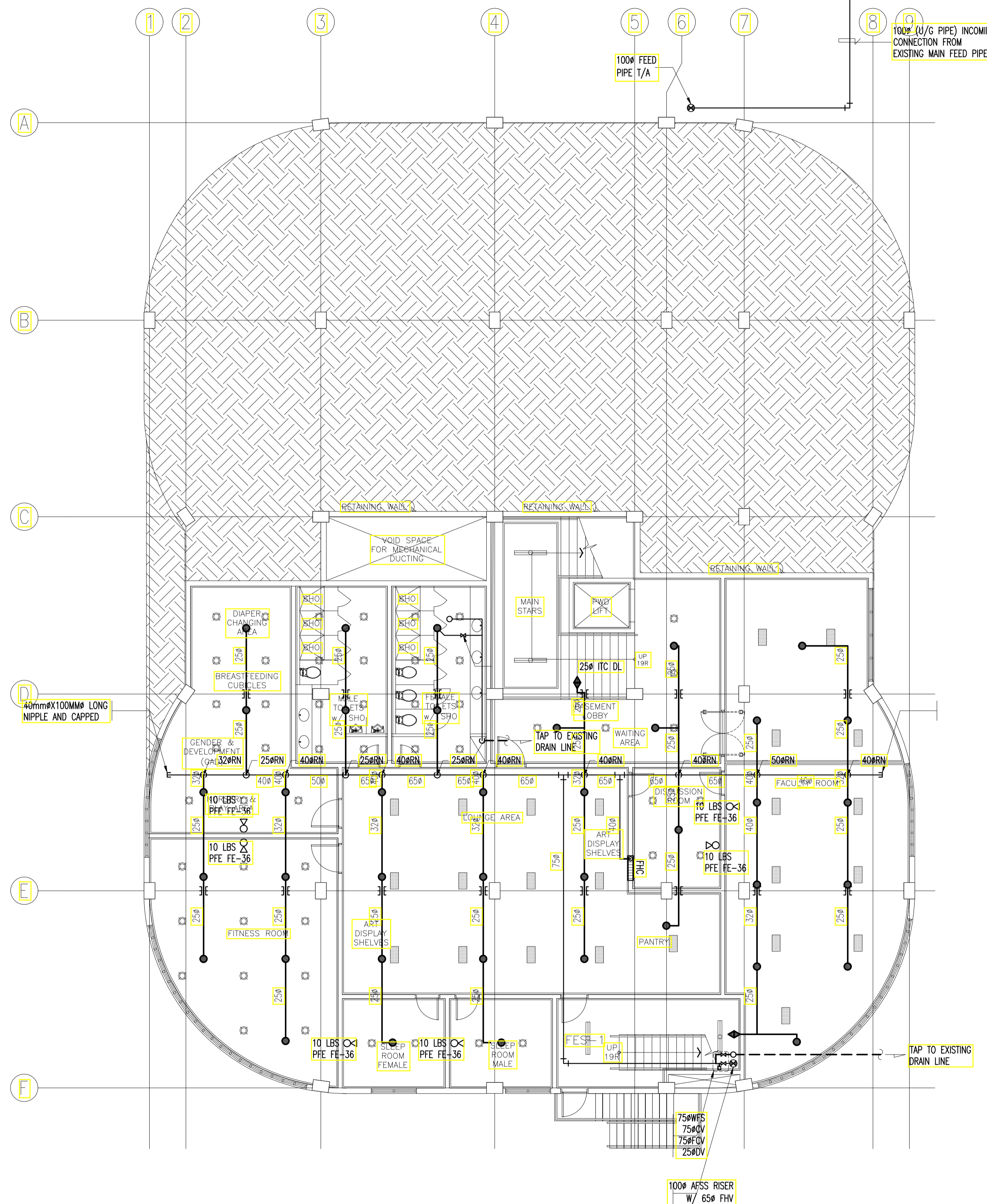
RECOMMENDING APPROVAL:  
**MERIAM F. FALLAR**  
FAD CHIEF

APPROVED BY:  
**EDWARD C. ALBARACIN**  
CAMPUS DIRECTOR

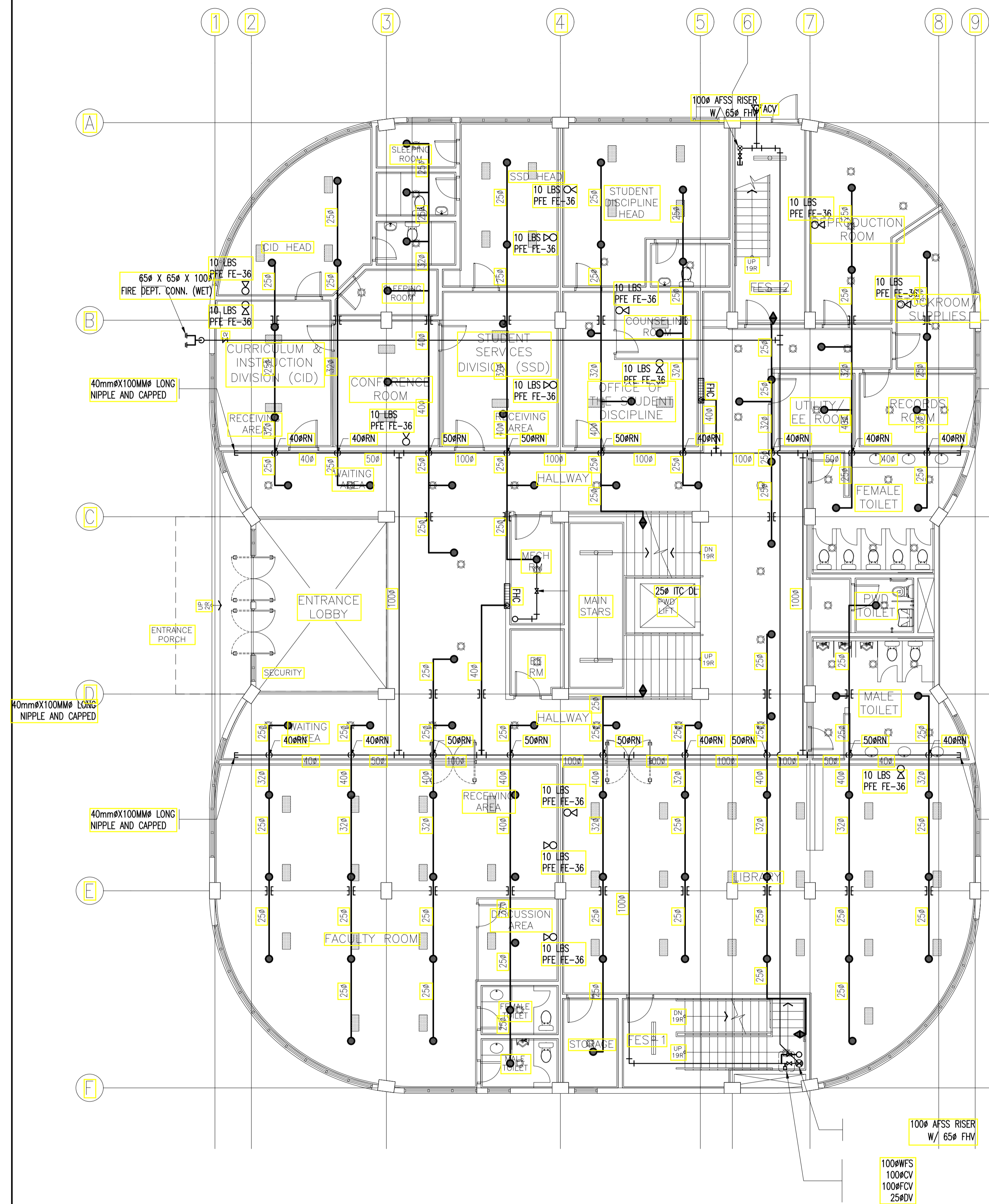
SHEET CONTENTS:  
GENERAL NOTES  
MATERIAL SPECIFICATIONS  
LEGENDS AND SYMBOLS  
LOCATION MAP  
SITE DEVELOPMENT PLAN  
AFSS (COMBINED SYSTEM) SCHEMATIC DIAGRAM

SHEET NO:  
**FP 01 08**

**GENERAL NOTES: FOR REFERENCE ONLY, ALL FIRE-PROTECTION WORKS ARE EXCLUDED IN PHASE 1**



**1**  
ACADEMIC BUILDING II  
BASEMENT REFLECTED CEILING PLAN AFSS LAYOUT  
FP-02 SCALE NTS



**2**  
ACADEMIC BUILDING II  
GROUND FLOOR REFLECTED CEILING PLAN AFSS LAYOUT  
FP-02 SCALE NTS

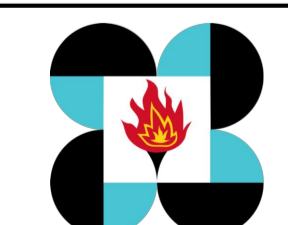
**ENRIQUE O. OLONAN & ASSOCIATES**  
ARCHITECTS ENGINEERS CONSULTANTS  
SUTITE 305 XAVIERVILLE SQUARE CONDOMINIUM NO. 38 XAVIERVILLE AVE., LOYOLA HEIGHTS, QUEZON CITY, 1108 TEL. NOS: 426-7009, 426-300-04 FAX NOS: 927-0608, 426-7214

**ENRIQUE O. OLONAN & ASSOCIATES, CO.**  
ARCHITECTS ENGINEERS CONSULTANTS

DESIGNER:  
**MELITON A. NAGUE**  
PROFESSIONAL MECHANICAL ENGINEER  
PRC No. 4908 Validity: 06/05/2024  
PTR No. 8535022 Date: 01/05/2021  
Place: MAKATI CITY TIN: 912-907-486

REPUBLIC ACT 9266  
DRAWINGS AND SPECIFICATIONS AND OTHER CONTRACT DOCUMENTS DULY SIGNED, STAMPED OR SEALED, AS INSTRUMENTS OF SERVICE ARE THE INTELLECTUAL PROPERTY AND DOCUMENT OF THE ARCHITECT, WHETHER THE OBJECT FOR WHICH THEY ARE MADE IS EXECUTED OR NOT. IT SHALL BE UNLAWFUL FOR ANY PERSON TO DUPLICATE OR TO MAKE COPIES OF SAID DOCUMENTS FOR USE IN THE REPRODUCTION OF AND FOR OTHER PROJECTS OR BUILDINGS, WHETHER EXECUTED PARTY OR IN WHOLE, WITHOUT THE WRITTEN CONSENT OF ARCHITECT OR AUTHOR OF SAID DOCUMENT.

PROJECT:  
**PROPOSED ACADEMIC BUILDING II / MULTI-PURPOSE GYMNASIUM**  
LOCATION: Brgy. Rizal, Odiangan, Romblon

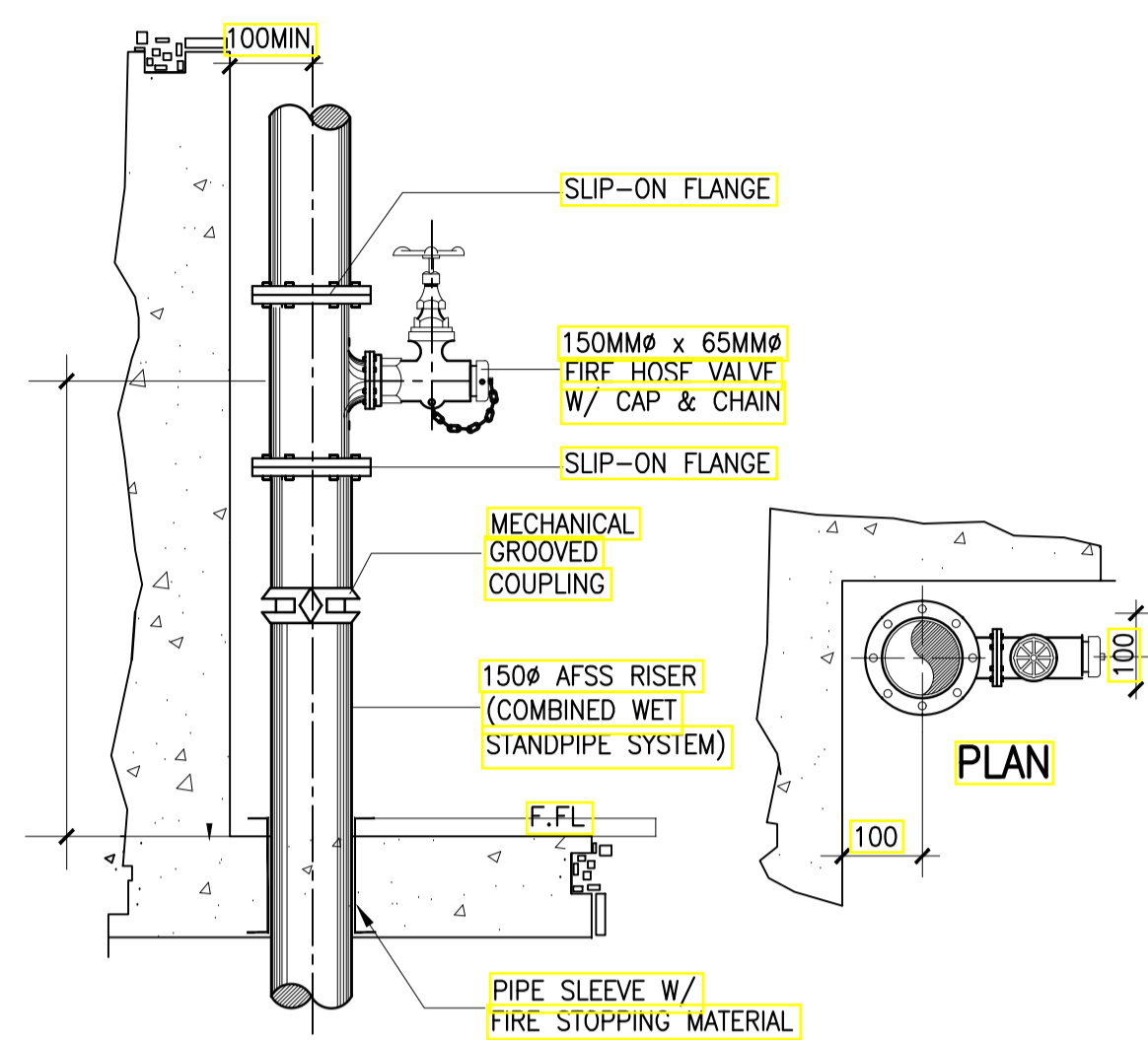
DESIGNED FOR:  
  
REPUBLIC OF THE PHILIPPINES  
PHILIPPINE SCIENCE HIGH SCHOOL - MIMAROPA REGIONAL CAMPUS

RECOMMENDING APPROVAL:  
**MERIAM F. FALLAR**  
FAD CHIEF

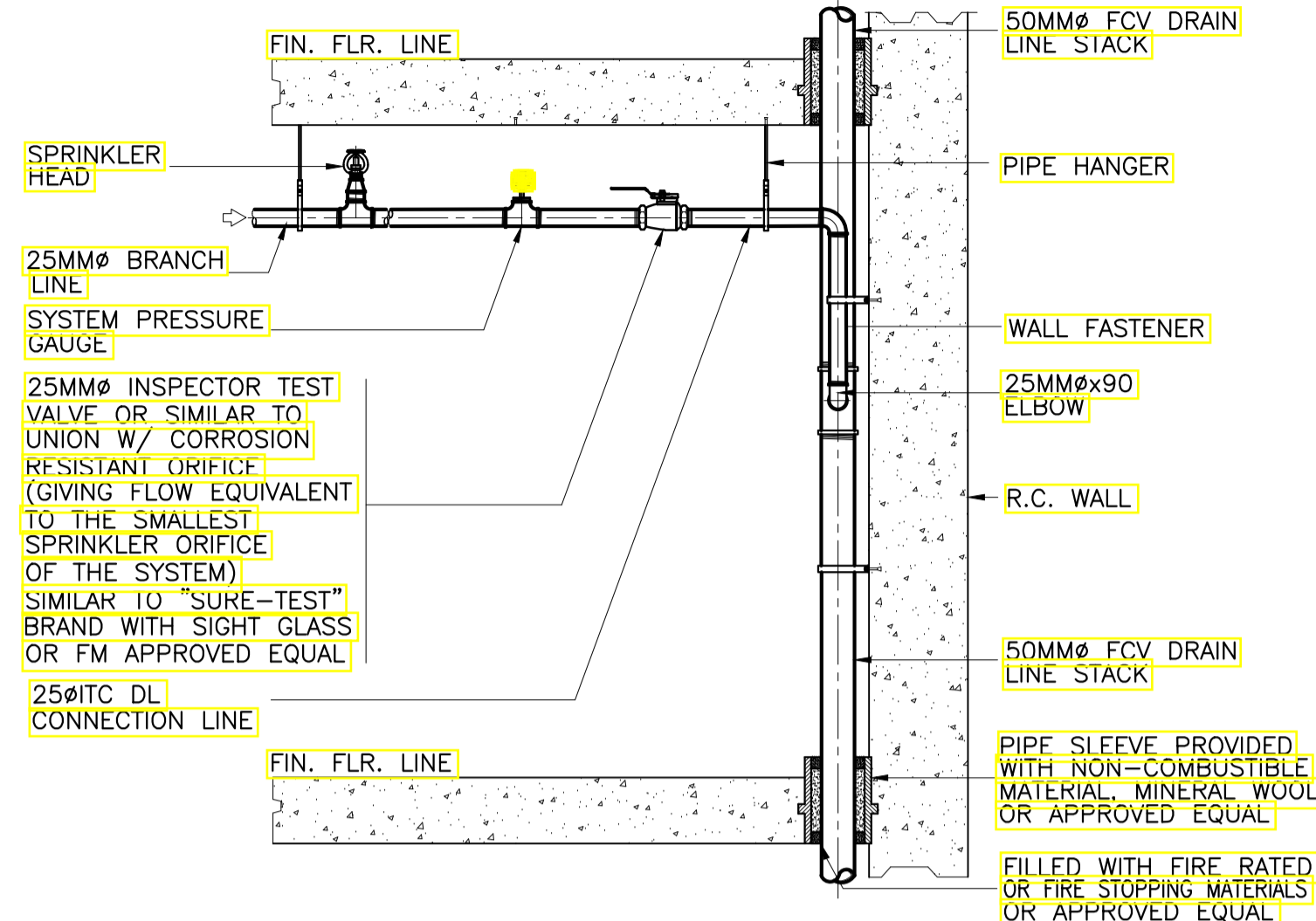
APPROVED BY:  
**EDWARD C. ALBARACIN**  
CAMPUS DIRECTOR

SHEET CONTENTS:  
BASEMENT REFLECTED CEILING AND GROUND FLOOR REFLECTED CEILING PLAN AFSS LAYOUT

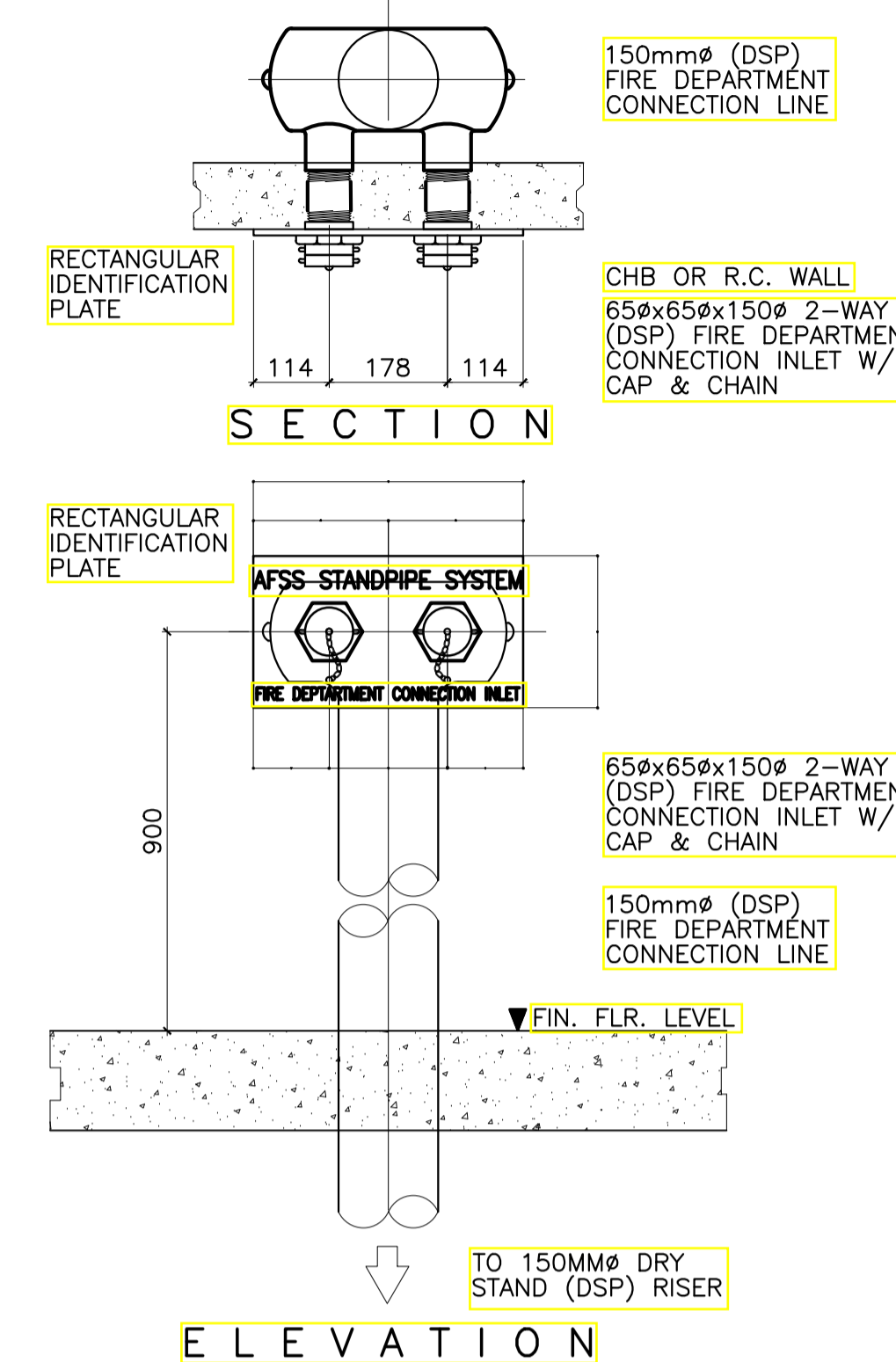
SHEET NO:  
**FP 02 08**



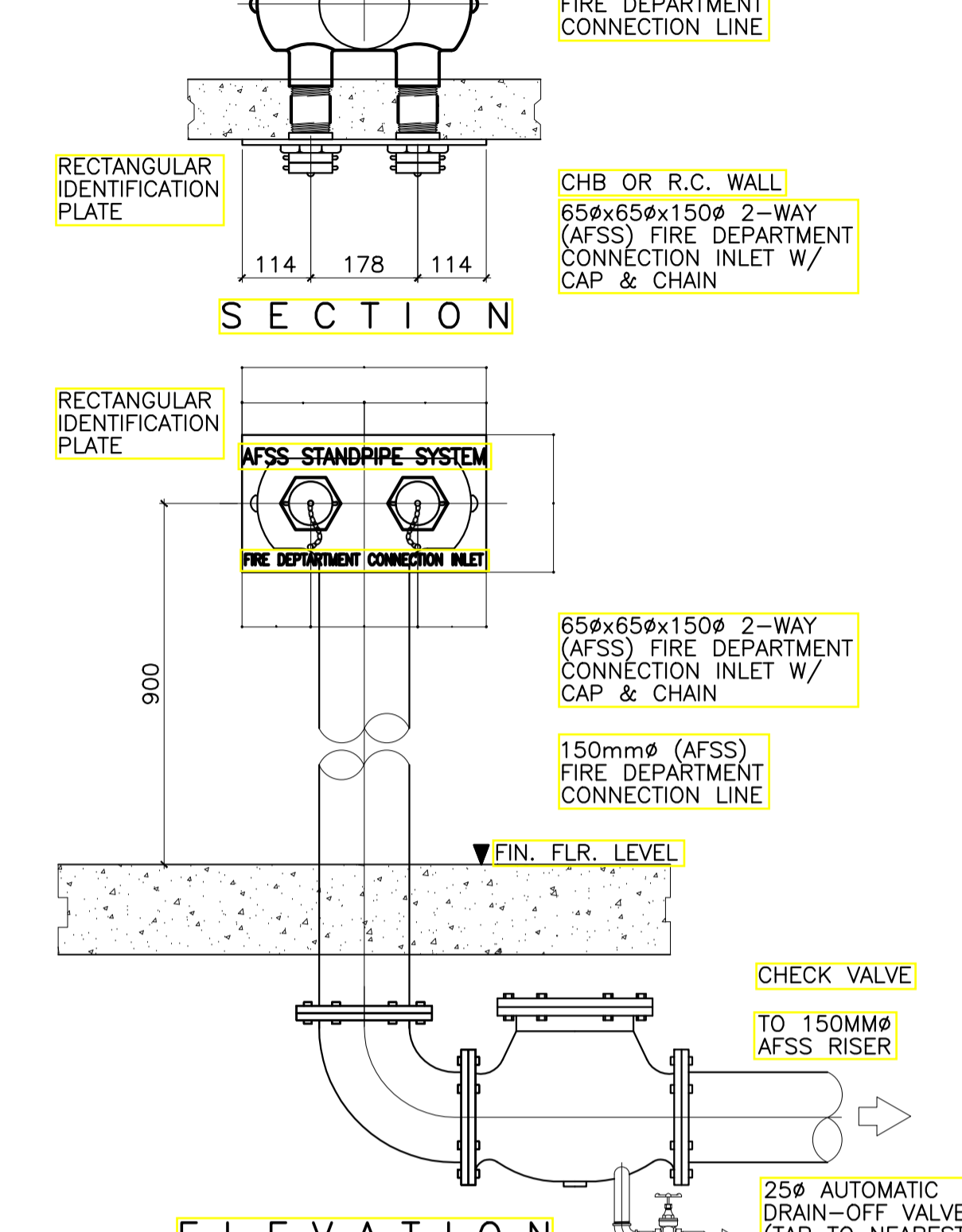
1 DETAILS OF FIRE HOSE VALVE  
FP-05 NOT TO SCALE



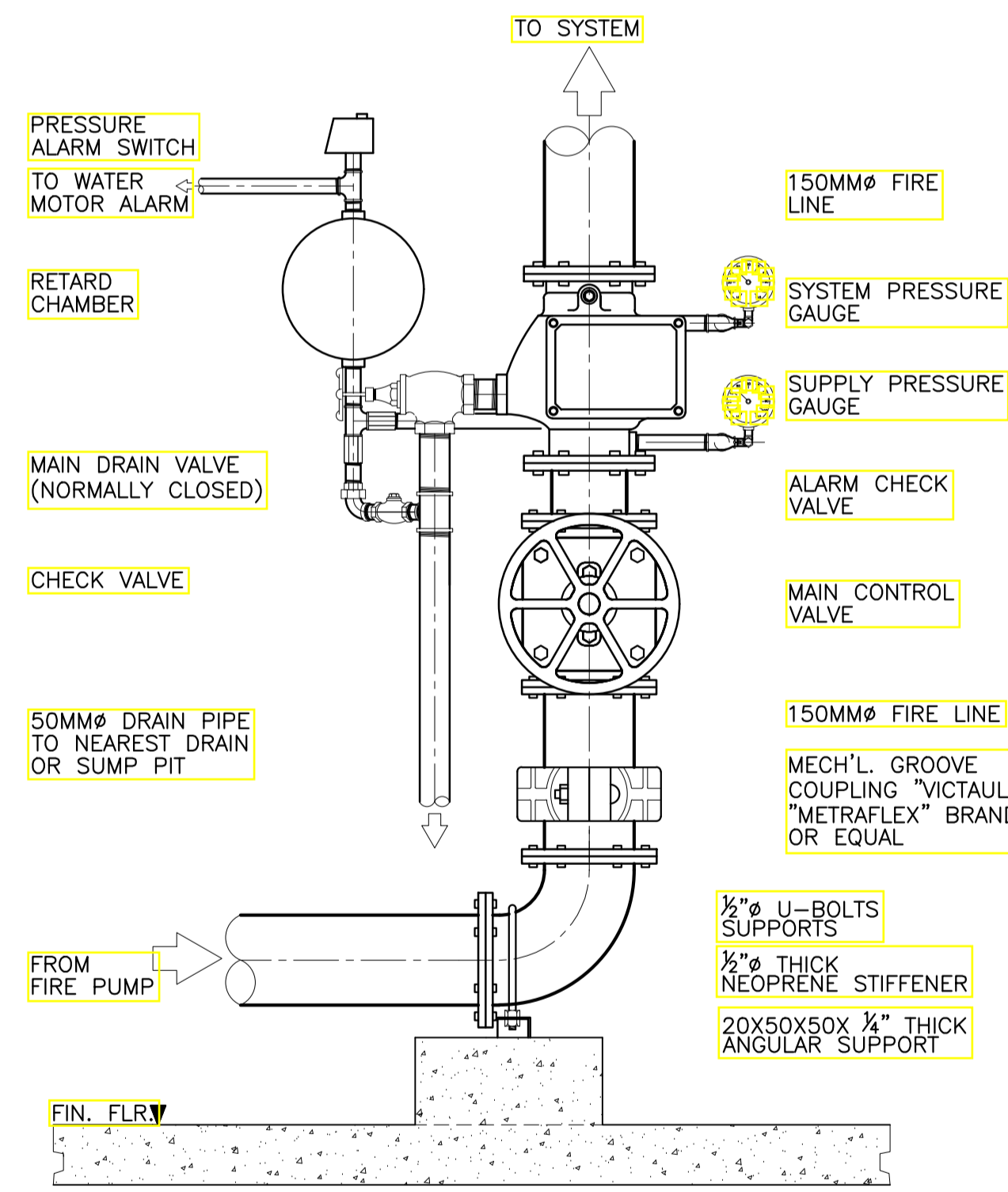
2 DETAIL OF INSPECTOR TEST CONNECTION  
FP-05 NOT TO SCALE



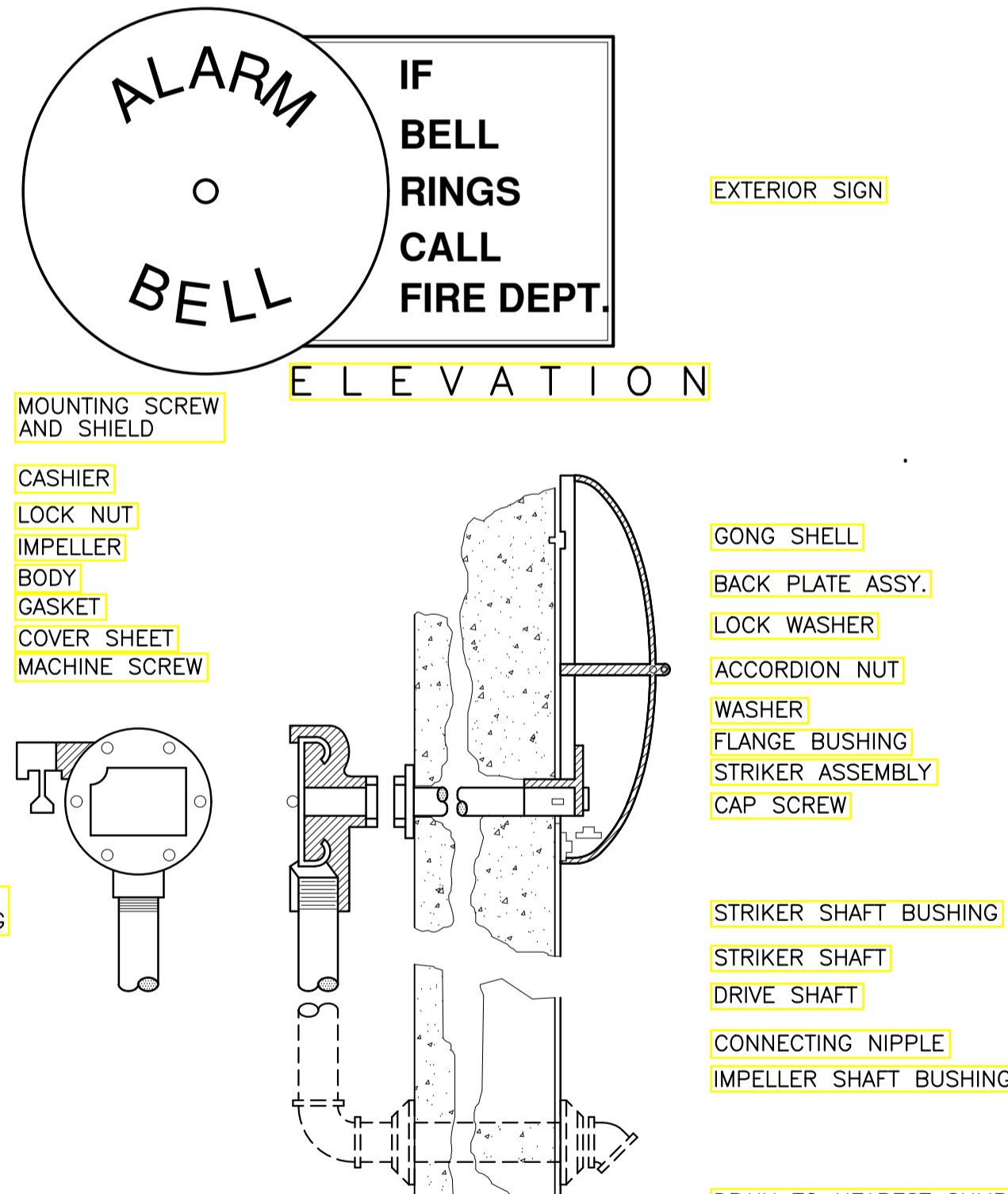
3 DETAIL OF DSP FIRE DEPT. INLET  
FP-05 SCALE 1:10 MTS.



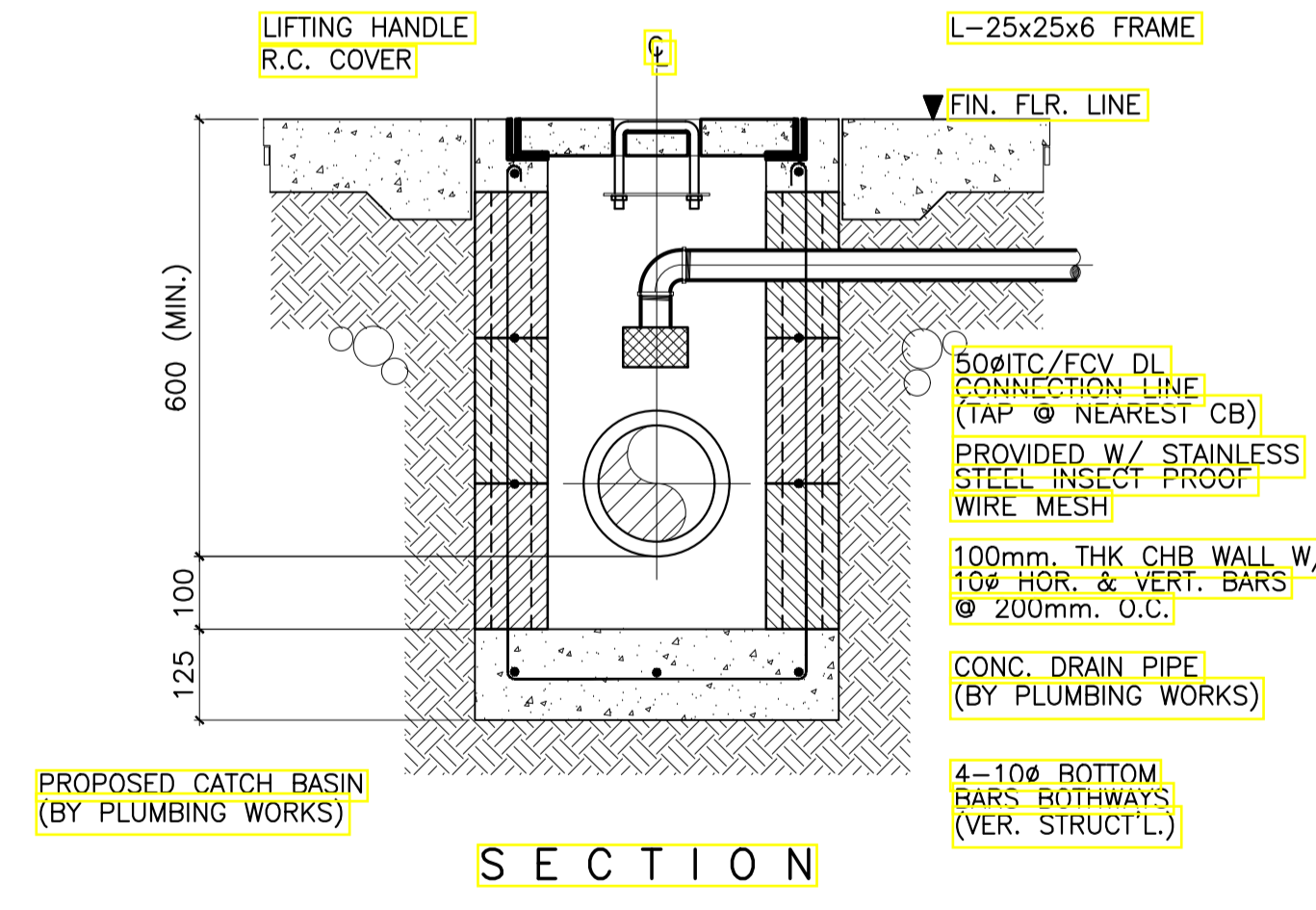
4 DETAIL OF AFSS FIRE DEPT. INLET  
FP-05 SCALE 1:10 MTS.



5 DETAIL OF ALARM CHECK VALVE ASSEMBLY (WET TYPE)  
FP-05 SCALE 1:10 MTS.



6 DETAIL OF ALARM MOTOR GONG  
FP-05 NOT TO SCALE



7 DETAIL OF FCV/ITC DL CONNECTION TAP TO CATCH BASIN  
FP-05 SCALE 1:10 MTS.

**ENRIQUE O. OLONAN & ASSOCIATES**  
ARCHITECTS ENGINEERS CONSULTANTS  
IN JOINT VENTURE WITH  
**ENRIQUE O. OLONAN & ASSOCIATES, CO.**  
ARCHITECTS ENGINEERS CONSULTANTS

DESIGNER:  
**MELITON A. NAGUE**  
PROFESSIONAL MECHANICAL ENGINEER  
PRC No. 4908 Validity: 06/05/2024  
PTR No. 8535022 Date: 01/05/2021  
Place: MAKATI CITY TIN: 912-907-486

REPUBLIC ACT 9266  
DRAWINGS AND SPECIFICATIONS AND OTHER CONTRACT DOCUMENTS DULY SIGNED, STAMPED OR SEALED, AS INSTRUMENTS OF SERVICE, ARE THE INTELLECTUAL PROPERTY AND DOCUMENT OF THE ARCHITECT. WHETHER THE OBJECT FOR WHICH THEY ARE MADE IS EXECUTED OR NOT, IT SHALL BE UNLAWFUL FOR ANY PERSON TO DUPLICATE OR TO MAKE COPIES OF SAID DOCUMENTS FOR USE IN THE REPRODUCTION OF AND FOR OTHER PROJECTS OR BUILDINGS, WHETHER EXECUTED PARTLY OR IN WHOLE, WITHOUT THE WRITTEN CONSENT OF ARCHITECT OR AUTHOR OF SAID DOCUMENT.

PROJECT:  
**PROPOSED ACADEMIC BUILDING II / MULTI-PURPOSE GYMNASIUM**  
LOCATION: Brgy. Rizal, Odiangan, Romblon

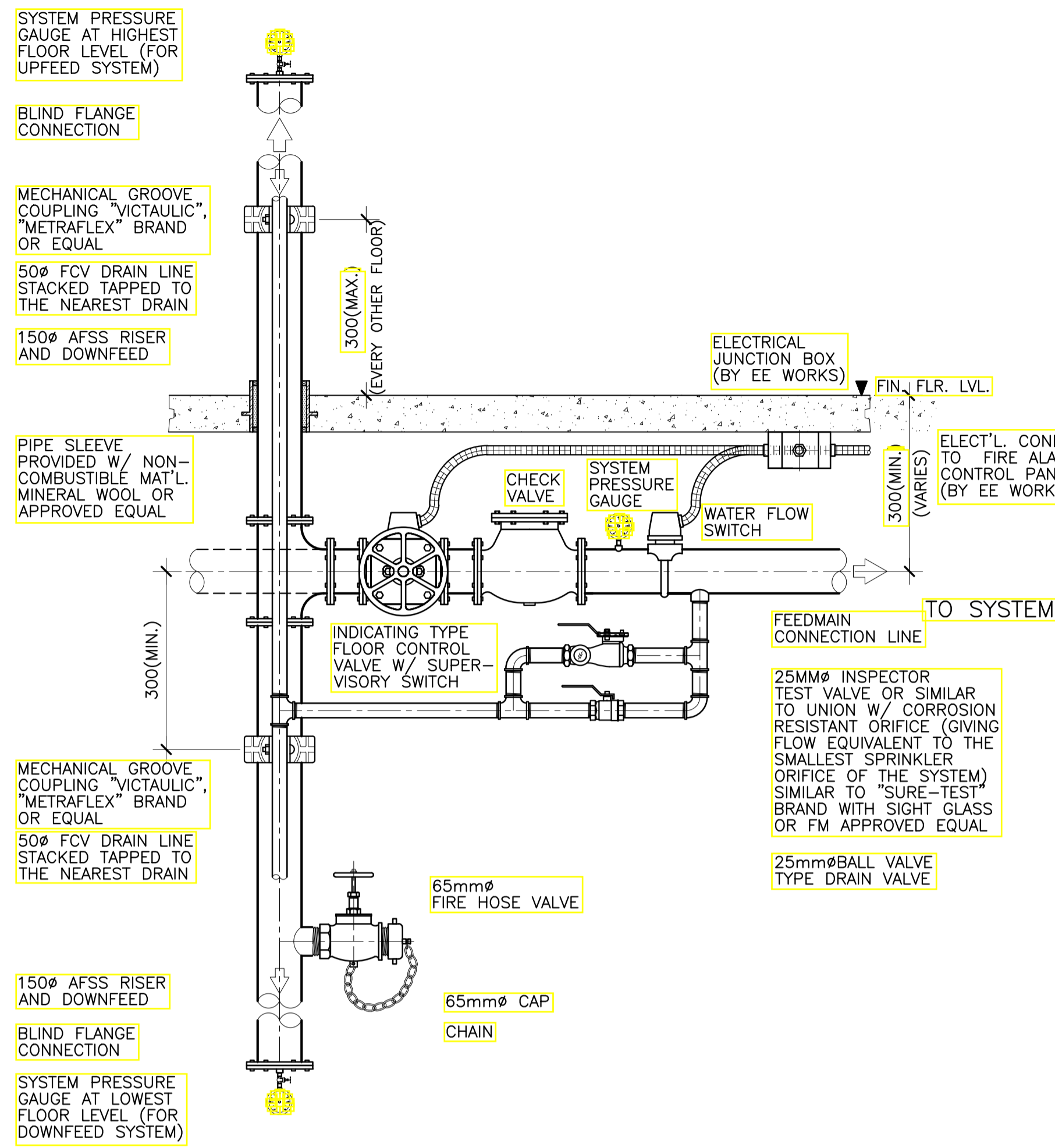
DESIGNED FOR:  
**REPUBLIC OF THE PHILIPPINES PHILIPPINE SCIENCE HIGH SCHOOL - MIMAROPA REGIONAL CAMPUS**

RECOMMENDING APPROVAL:  
**MERIAM F. FALLAR**  
FAD CHIEF

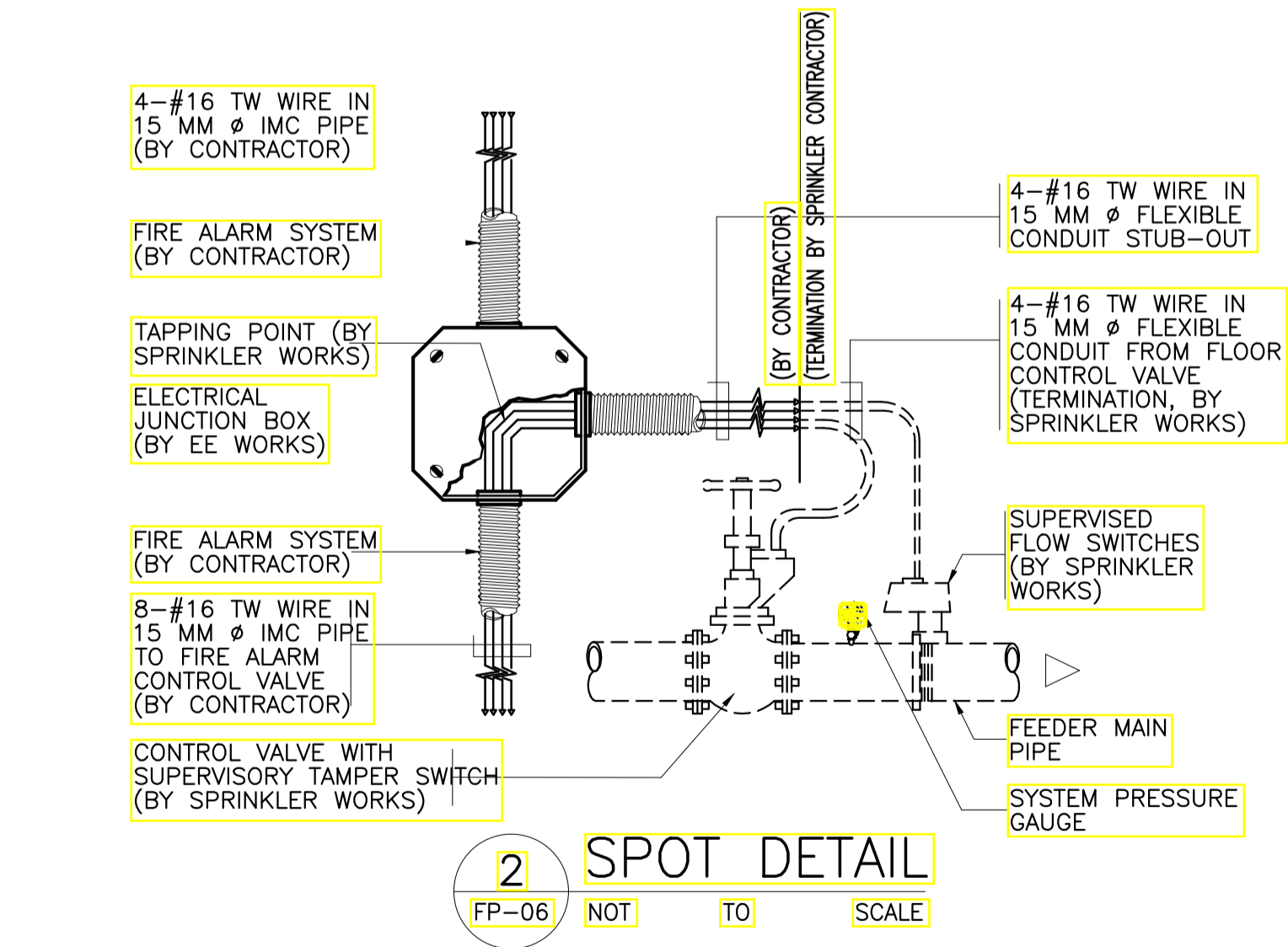
APPROVED BY:  
**EDWARD C. ALBARACIN**  
CAMPUS DIRECTOR

SHEET CONTENTS:  
MISCELLANEOUS DETAILS SHEET 1 OF 4

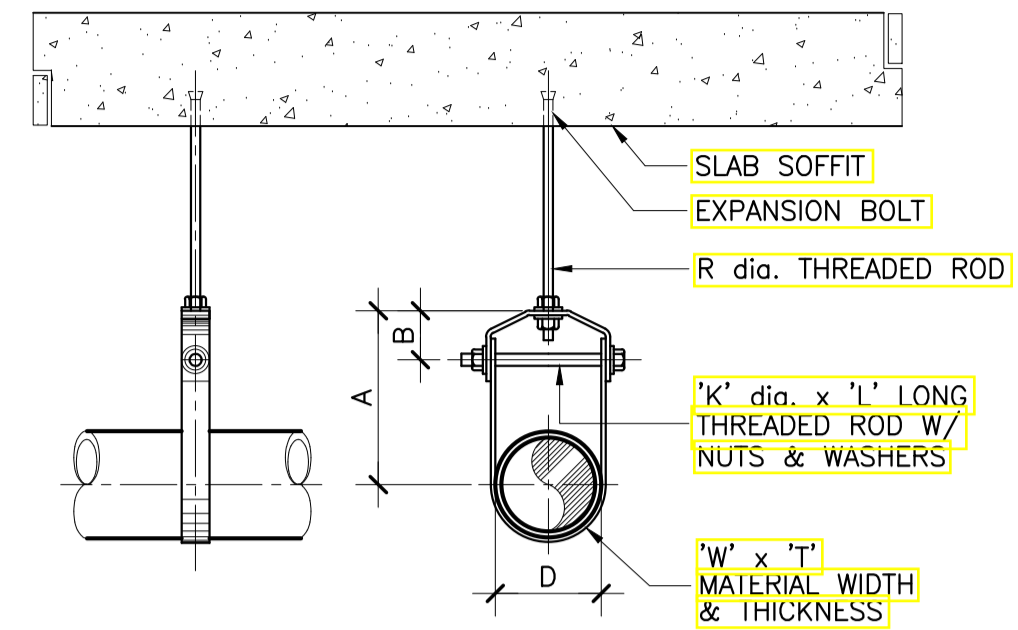
SHEET NO:  
**FP 05 08**



**1** **DETAIL OF SUPERVISORY FLOOR CONTROL VALVE ASSEMBLY (COMBINED SYSTEM)**  
 FP-06 SCALE 1:15 MTS.



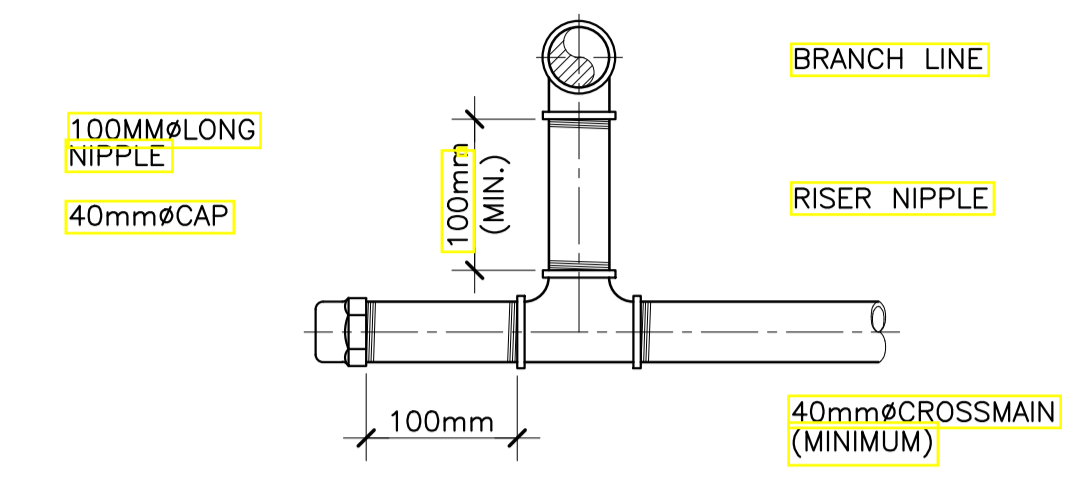
**2** **SPOT DETAIL**  
 FP-06 NOT TO SCALE



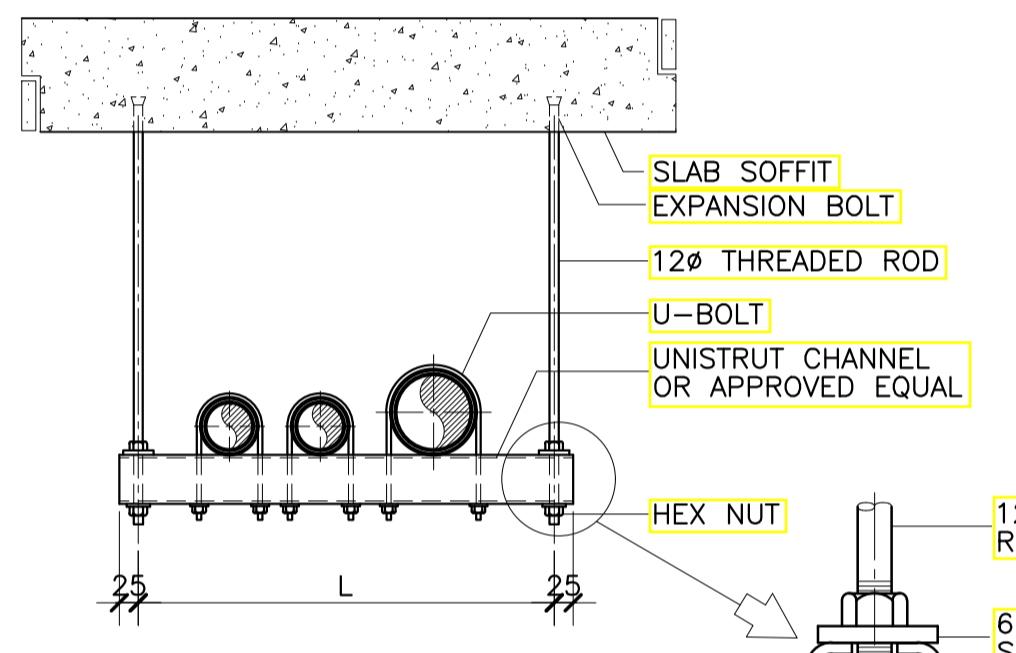
**3** **DETAIL OF PIPE HANGER**  
 FP-06 SCALE 1:10 MTS.

**STANDARD CLEVIS HANGERS TABLE OF DIMENSIONS**

D	A	B	R	W x T	K x L
34	80	45	12	25 x 3	M10 x 70
43	90	50	12	25 x 3	M10 x 80
48	95	50	12	25 x 3	M10 x 85
60	105	55	12	25 x 3	M10 x 100
76	115	60	14	40 x 6	M12 x 115
89	125	60	14	40 x 6	M12 x 130
114	145	65	18	40 x 6	M16 x 160
140	165	75	18	40 x 6	M16 x 190
165	185	80	18	40 x 6	M16 x 210

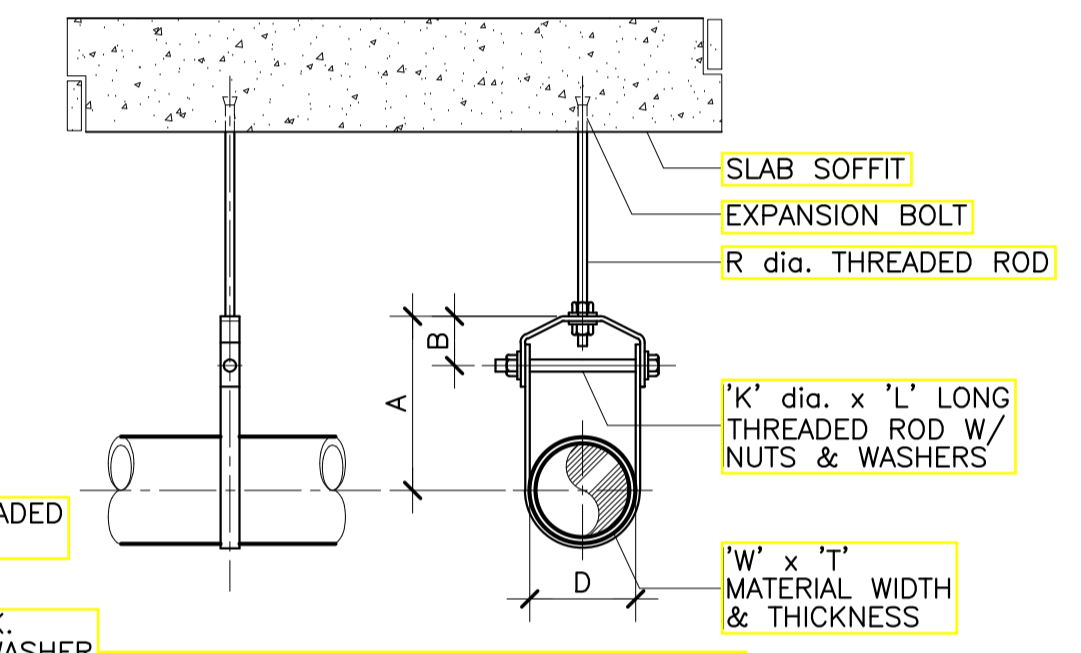


**4** **DETAIL OF FLUSHING CONNECTION**  
 FP-06 SCALE 1:5 MTS.



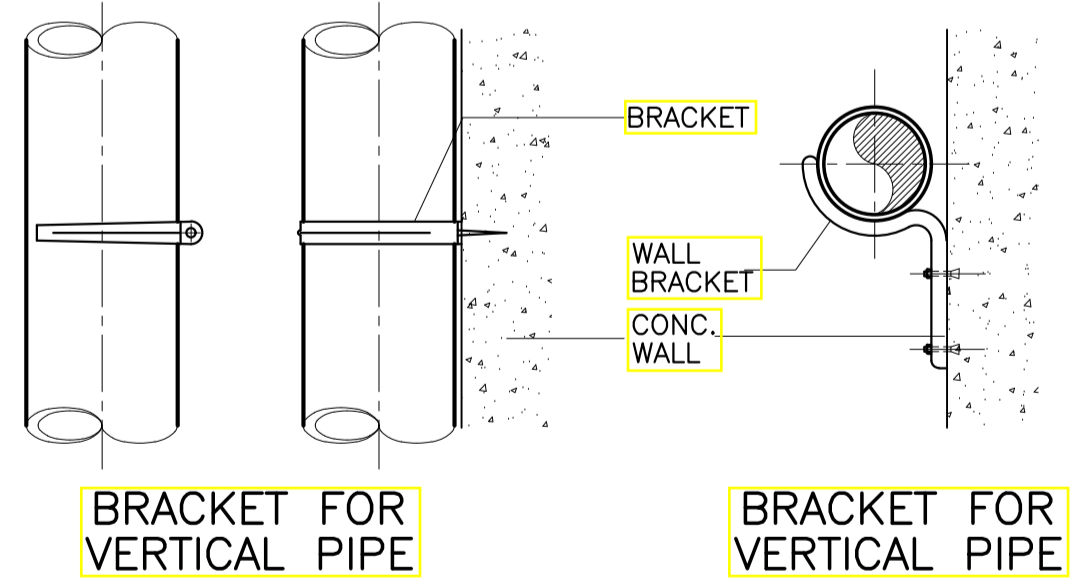
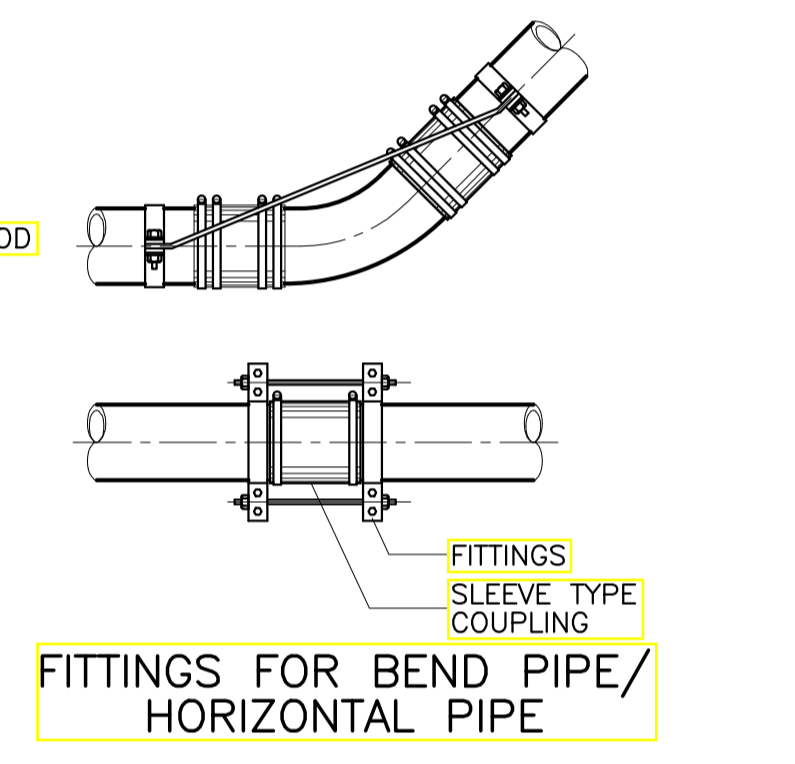
**STANDARD TRAPEZE HANGERS TABLE OF DIMENSIONS**

PART NO.	L	LOAD CAPACITY	CHANNEL
P2700	300	3.20 kN	P4000
P2701	450	2.00 kN	P4000
P2702	600	1.45 kN	P4000
P2703	600	4.23 kN	P2000
P2704	750	3.34 kN	P2000
P2705	900	3.50 kN	P1000
P2705	1000	3.25 kN	P1000



**STANDARD CLEVIS HANGERS TABLE OF DIMENSIONS**

D	A	B	R	W x T	K x L
34	80	45	12	25 x 3	M10 x 70
43	90	50	12	25 x 3	M10 x 80
48	95	50	12	25 x 3	M10 x 85
60	105	55	12	25 x 3	M10 x 100
76	115	60	14	40 x 6	M12 x 115
89	125	60	14	40 x 6	M12 x 130
114	145	65	18	40 x 6	M16 x 160
140	165	75	18	40 x 6	M16 x 190
165	185	80	18	40 x 6	M16 x 210



**STANDARD VERTICAL CLAMP TABLE OF DIMENSIONS**

D	A	B	C	W x T	K x L
60	250	114	48	40 x 6	M12 x 40
76	266	130	48	50 x 6	M12 x 40
114	304	168	48	50 x 6	M12 x 40
165	468	254	75	75 x 10	M16 x 60
219	519	305	75	75 x 10	M16 x 60
273	573	359	75	75 x 10	M16 x 60
324	624	410	75	75 x 10	M16 x 60

**5** **DETAIL OF PIPE HANGERS, CLAMPS & BRACKETS**  
 FP-06 SCALE 1:10 MTS.

**ENRIQUE O. OLONAN & ASSOCIATES**  
 ARCHITECTS ENGINEERS CONSULTANTS  
 IN JOINT VENTURE WITH  
**ENRIQUE O. OLONAN & ASSOCIATES, CO.**  
 ARCHITECTS ENGINEERS CONSULTANTS

DESIGNER:  
**MELITON A. NAGUE**  
 PROFESSIONAL MECHANICAL ENGINEER  
 PRC No. 4908 Validity: 06/05/2024  
 PTR No. 8535022 Date: 01/05/2021  
 Place: MAKATI CITY TIN: 912-907-486

REPUBLIC ACT 9266  
 DRAWINGS AND SPECIFICATIONS AND OTHER CONTRACT DOCUMENTS DULY SIGNED, STAMPED OR SEALED, AS INSTRUMENTS OF SERVICE, ARE THE INTELLECTUAL PROPERTY AND DOCUMENT OF THE ARCHITECT. WHETHER THE OBJECT FOR WHICH THEY ARE MADE IS EXECUTED OR NOT, IT SHALL BE UNLAWFUL FOR ANY PERSON TO DUPLICATE OR TO MAKE COPIES OF SAID DOCUMENTS FOR USE IN THE REPRODUCTION OF AND FOR OTHER PROJECTS OR BUILDINGS, WHETHER EXECUTED PARTY OR IN WHOLE, WITHOUT THE WRITTEN CONSENT OF ARCHITECT OR AUTHOR OF SAID DOCUMENT.

PROJECT:  
**PROPOSED ACADEMIC BUILDING II / MULTI-PURPOSE GYMNASIUM**  
 LOCATION: Brgy. Rizal, Odiangan, Romblon

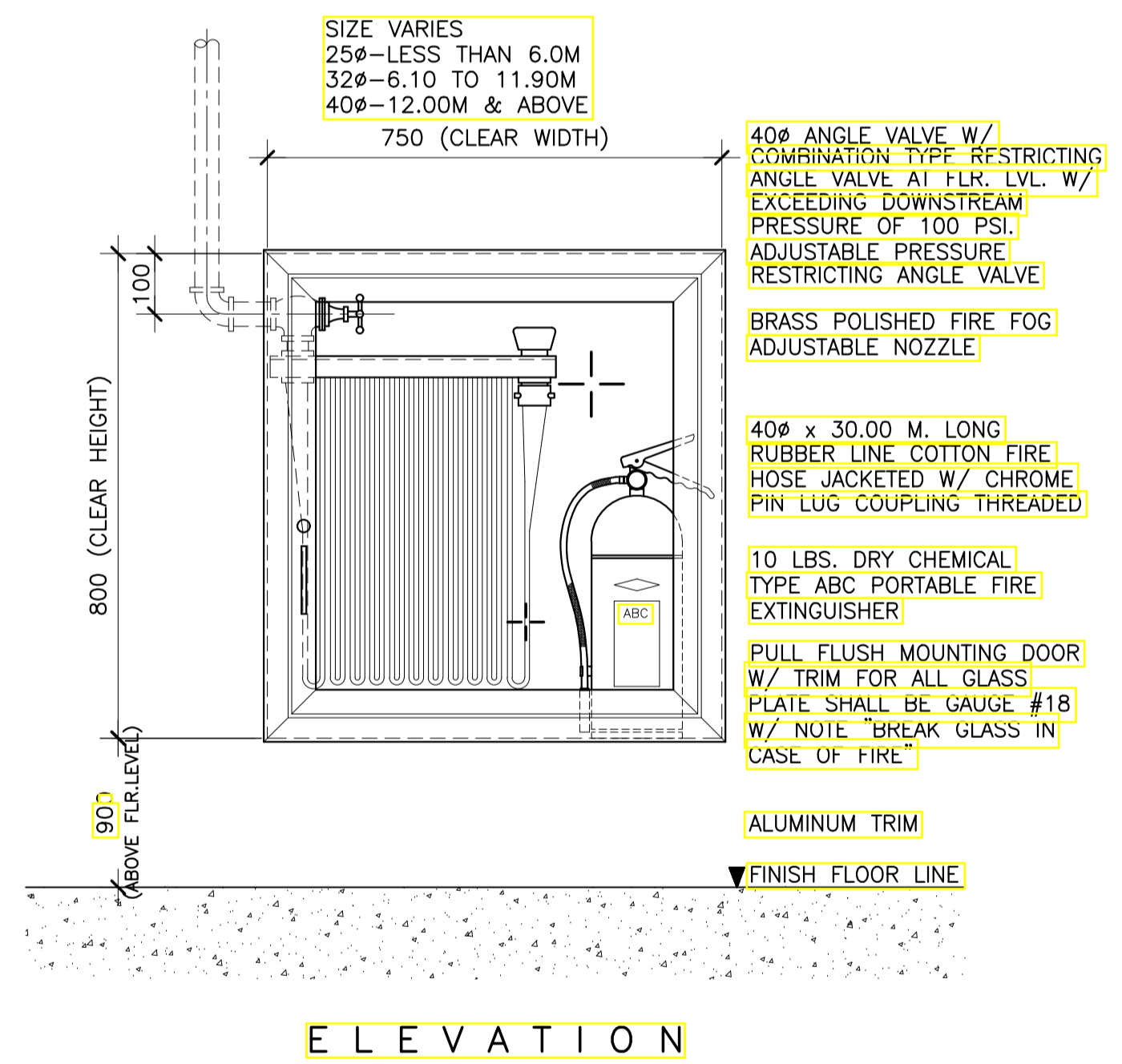
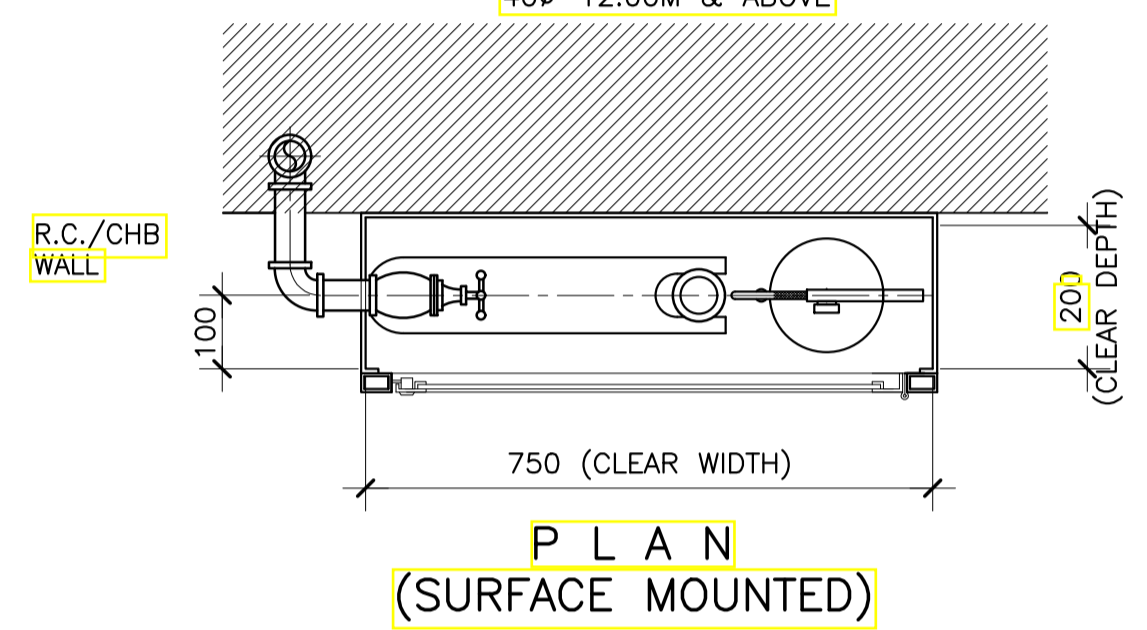
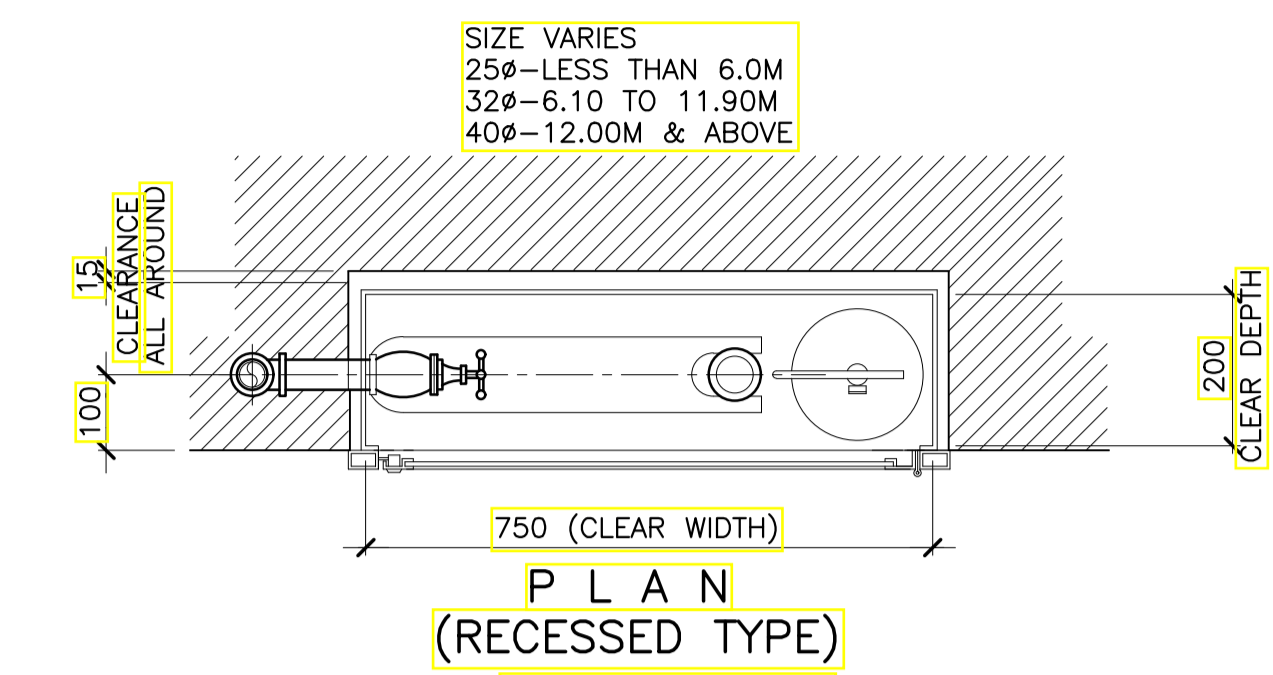
DESIGNED FOR:  
  
 REPUBLIC OF THE PHILIPPINES  
 PHILIPPINE SCIENCE HIGH SCHOOL - MIMAROPA REGIONAL CAMPUS

RECOMMENDING APPROVAL:  
**MERIAM F. FALLAR**  
 FAD CHIEF

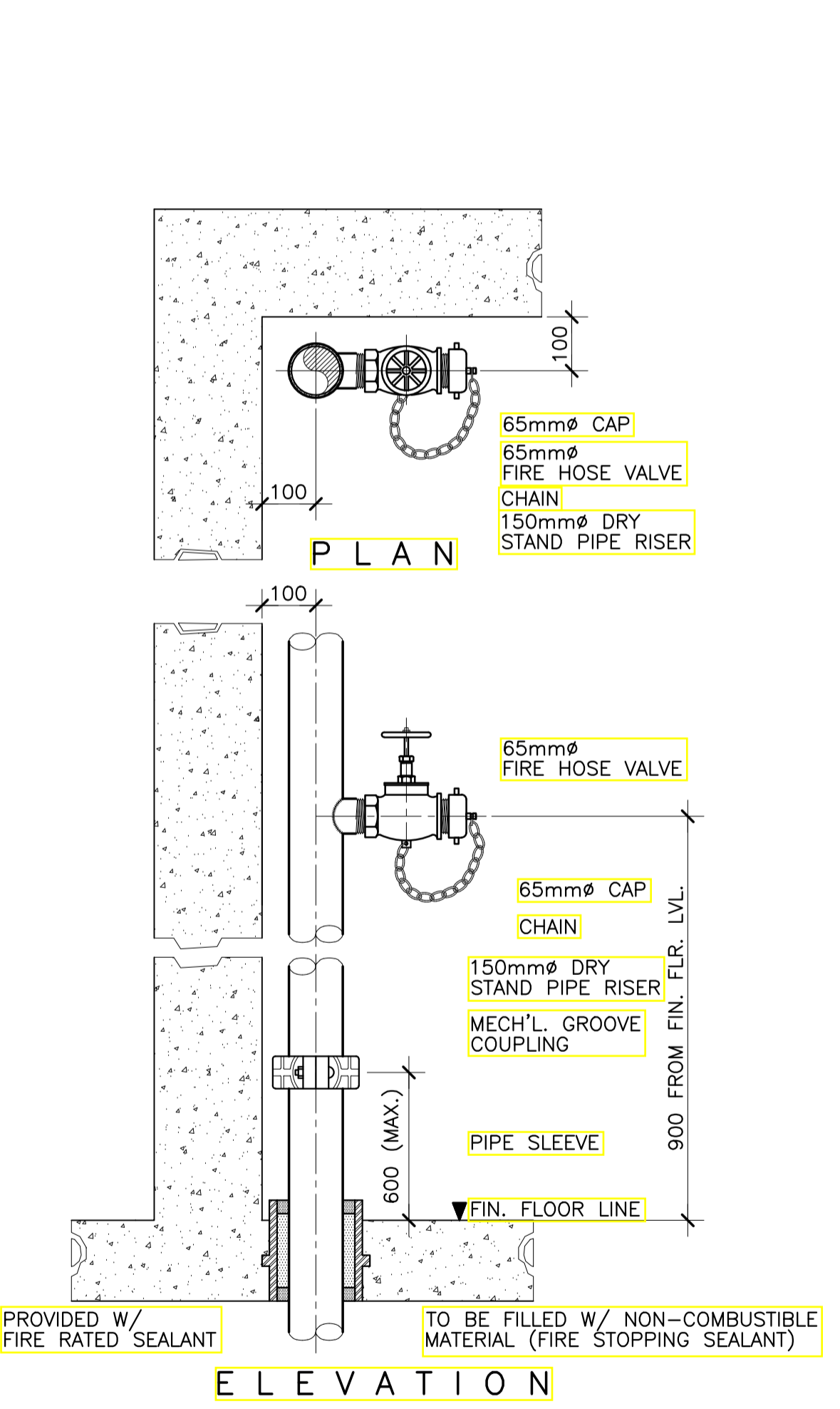
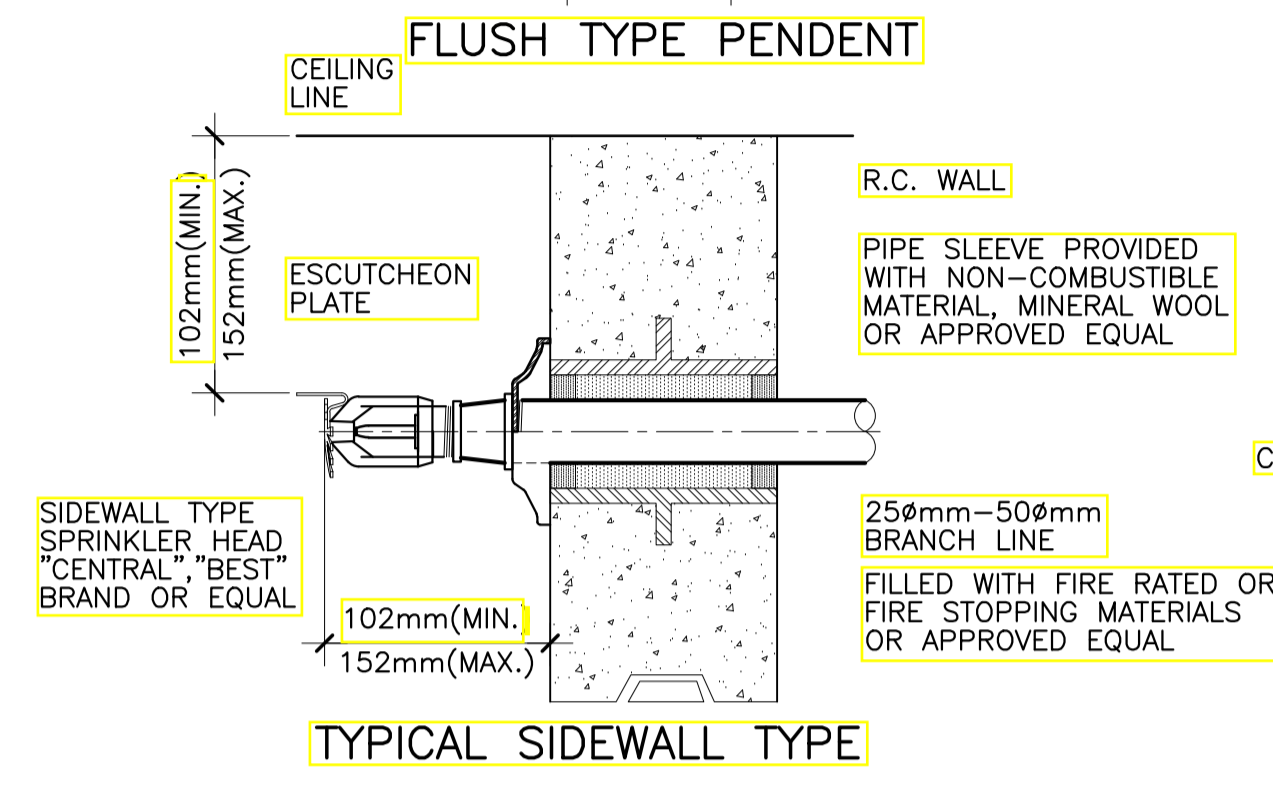
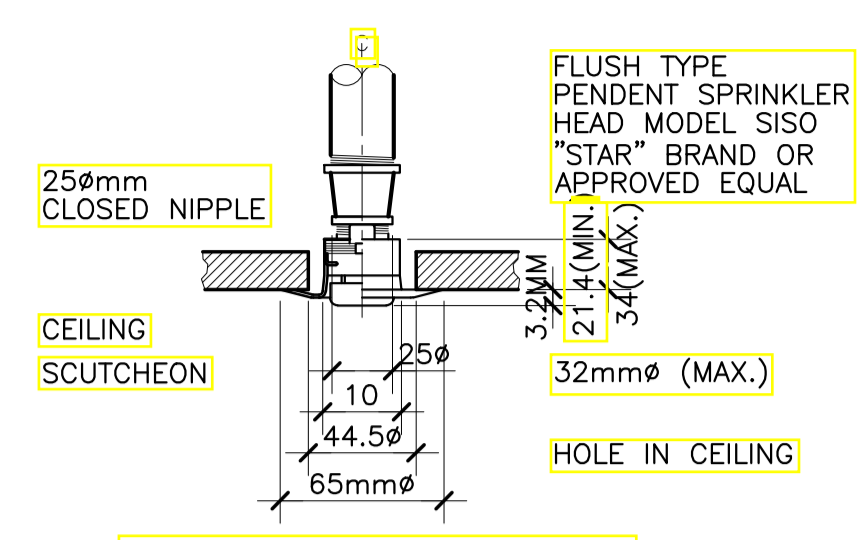
APPROVED BY:  
**EDWARD C. ALBARACIN**  
 CAMPUS DIRECTOR

SHEET CONTENTS:  
 MISCELLANEOUS DETAILS SHEET 2 OF 4

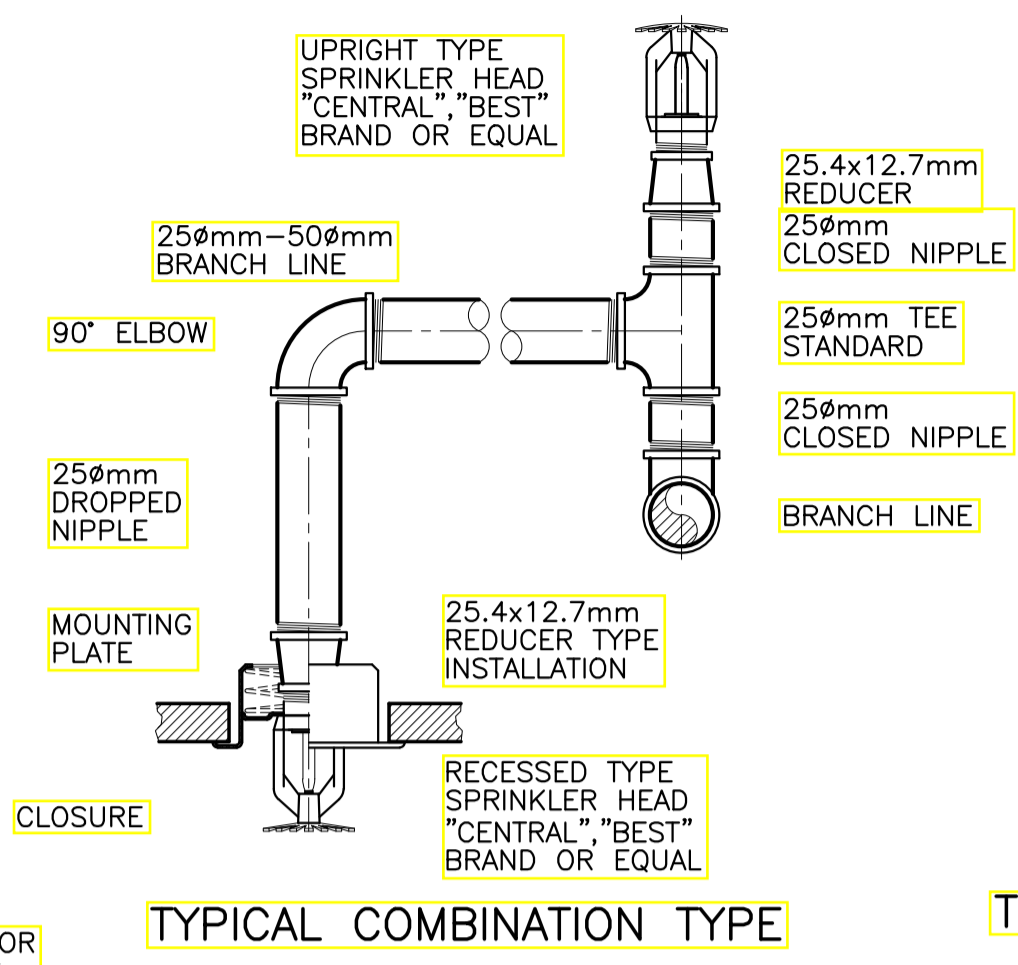
SHEET NO:  
**FP 06 08**



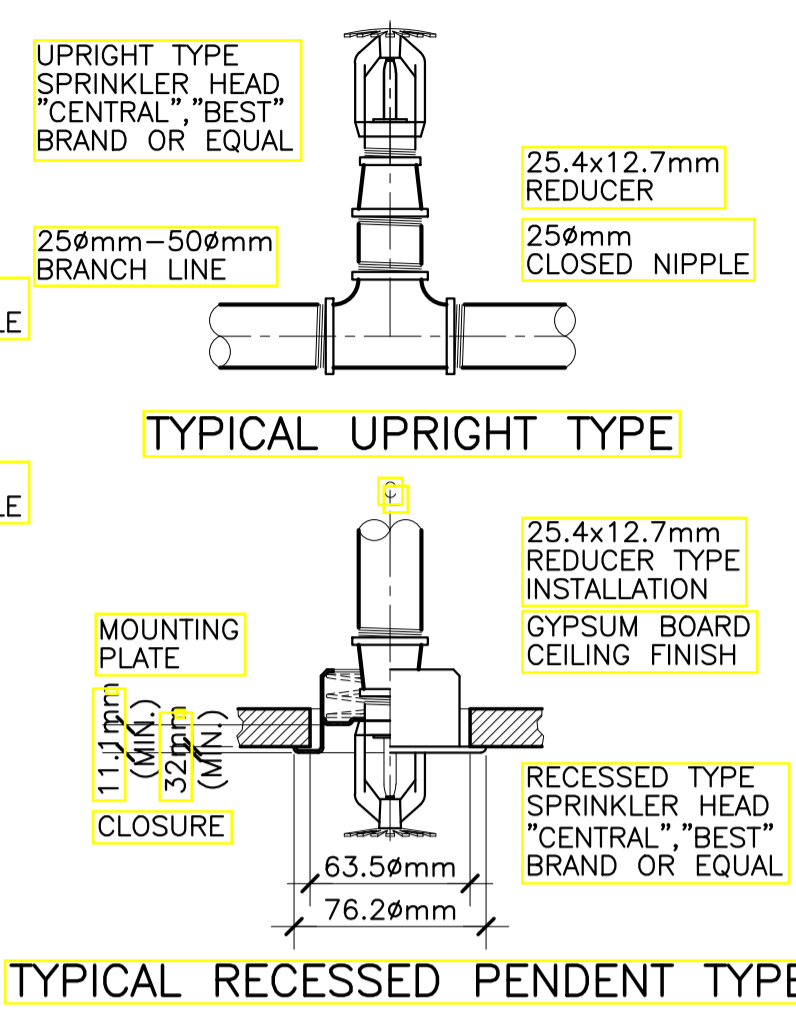
1  
FP-07 SCALE 1:10 MTS.



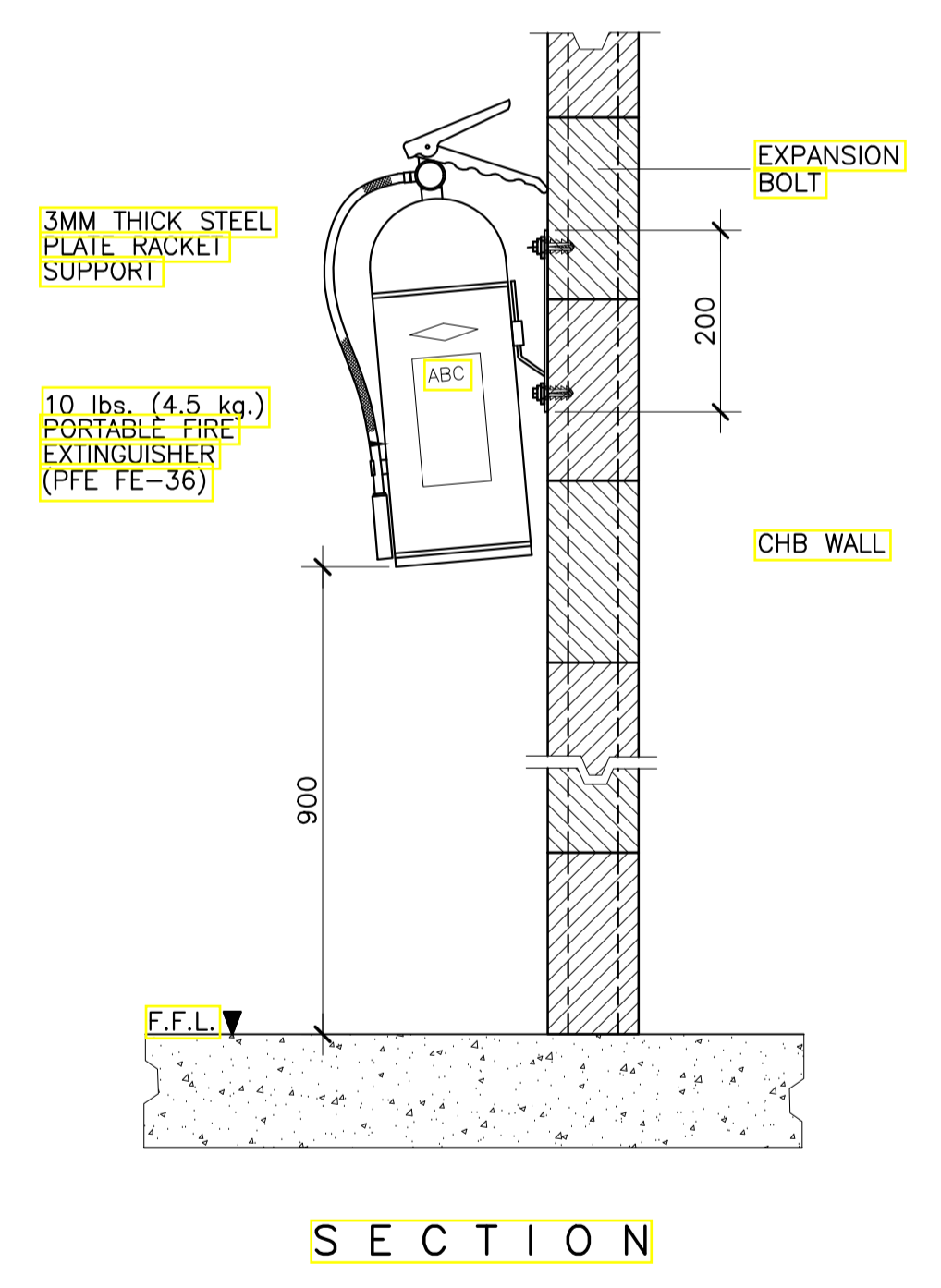
3  
FP-07 SCALE 1:10 MTS.



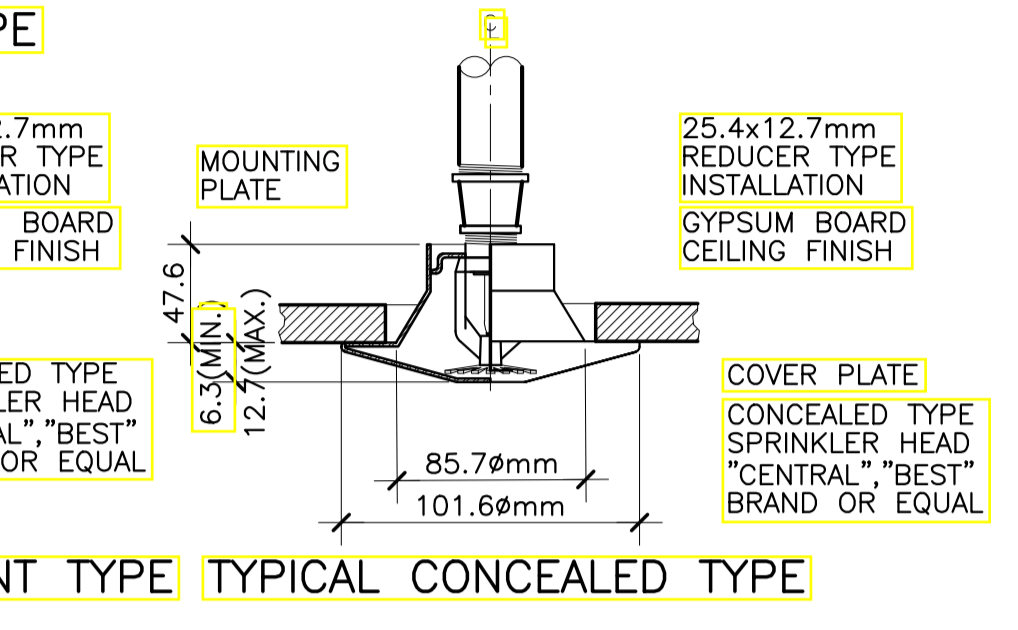
FP-07  
FP-13 SCALE 1:3 MTS.



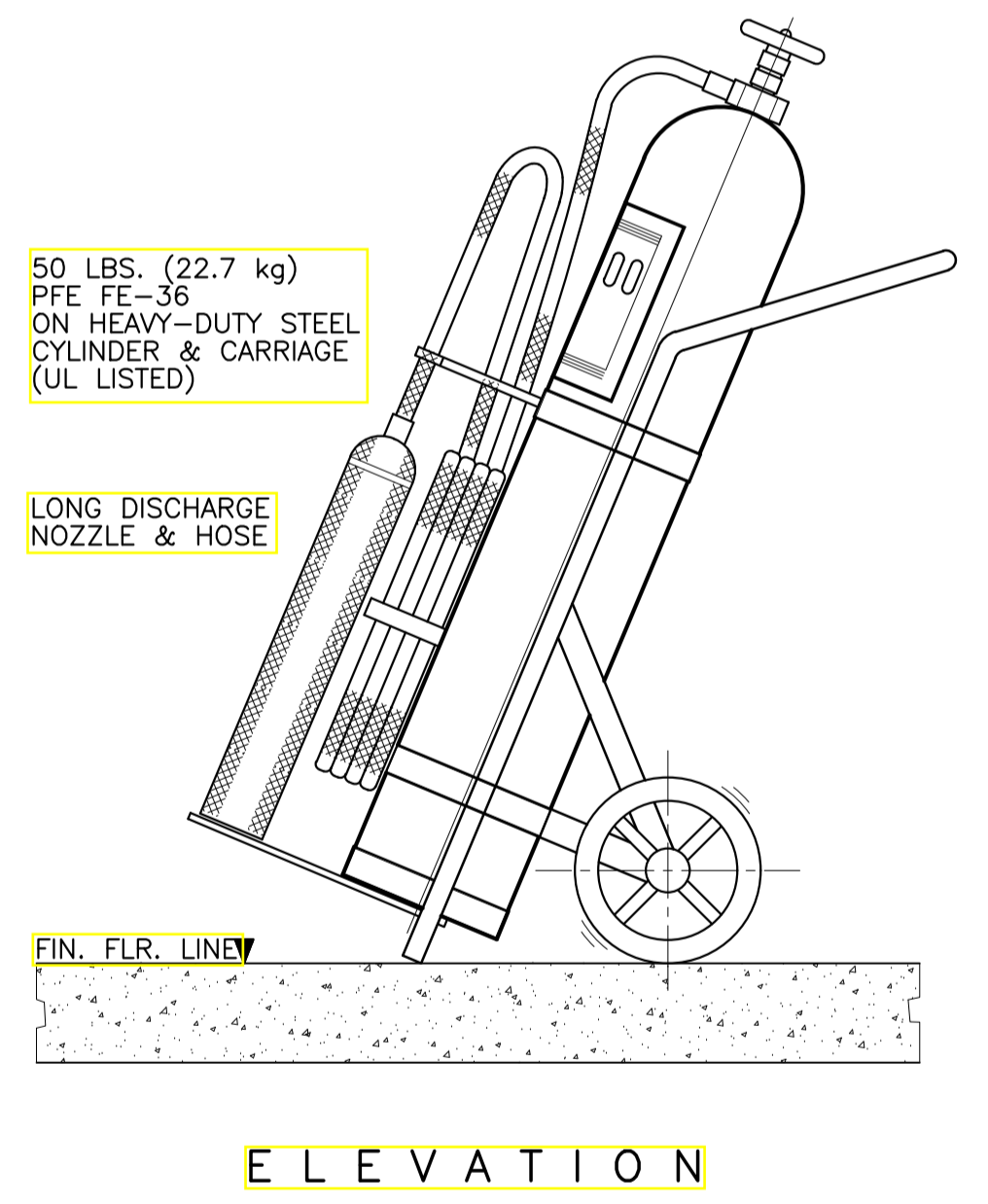
FP-07  
FP-13 SCALE 1:3 MTS.



4  
FP-07 NOT TO SCALE



5  
FP-07 NOT TO SCALE



5  
FP-07 NOT TO SCALE

**ENRIQUE O. OLONAN & ASSOCIATES**  
ARCHITECTS ENGINEERS CONSULTANTS

IN JOINT VENTURE WITH

**ENRIQUE O. OLONAN & ASSOCIATES, CO.**  
ARCHITECTS ENGINEERS CONSULTANTS

SUITE 305  
XAVIERVILLE SQUARE  
CONDOMINIUM  
NO. 38 XAVIERVILLE  
AVENUE, LORON A HEIGHTS,  
QUEZON CITY, 1108  
TEL. NOS: 426 7009;  
426 3040-41  
FAX NOS: 927 0608;  
426 7214

DESIGNER:

**MELITON A. NAGUE**  
PROFESSIONAL MECHANICAL ENGINEER

PRC No. 4908 Validity: 06/05/2024  
PTR No. 8535022 Date: 01/05/2021  
Place: MAKATI CITY TIN: 912-907-486

REPUBLIC ACT 9266

DRAWINGS AND SPECIFICATIONS AND OTHER CONTRACT DOCUMENTS DULY SIGNED, STAMPED OR SEALED, AS INSTRUMENTS OF SERVICE, ARE THE INTELLECTUAL PROPERTY AND DOCUMENT OF THE ARCHITECT. WHETHER THE OBJECT FOR WHICH THEY ARE MADE IS EXECUTED OR NOT, IT SHALL BE UNLAWFUL FOR ANY PERSON TO DUPLICATE OR TO MAKE COPIES OF SAID DOCUMENTS FOR USE IN THE REPRODUCTION OF AND FOR OTHER PROJECTS OR BUILDINGS, WHETHER EXECUTED PARTLY OR IN WHOLE, WITHOUT THE WRITTEN CONSENT OF ARCHITECT OR AUTHOR OF SAID DOCUMENT.

PROJECT:

**PROPOSED  
ACADEMIC BUILDING II /  
MULTI-PURPOSE GYMNASIUM**

LOCATION: Brgy. Rizal, Odiangan, Romblon

DESIGNED FOR:

REPUBLIC OF THE PHILIPPINES  
PHILIPPINE SCIENCE HIGH SCHOOL -  
MIMAROPA REGIONAL CAMPUS

RECOMMENDING APPROVAL:

**MERIAM F. FALLAR**  
FAD CHIEF

APPROVED BY:

**EDWARD C. ALBARACIN**  
CAMPUS DIRECTOR

SHEET CONTENTS:

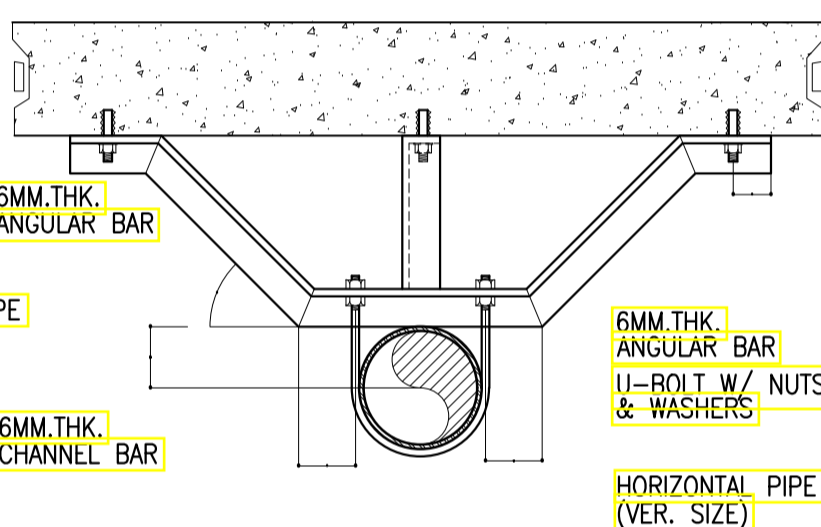
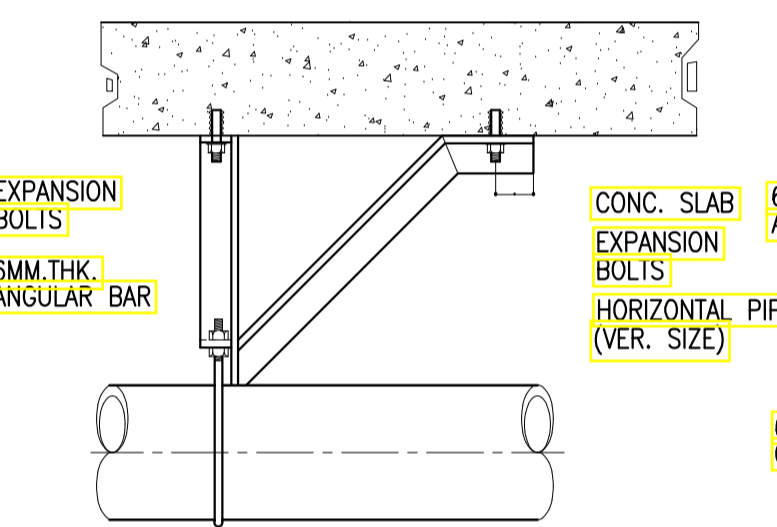
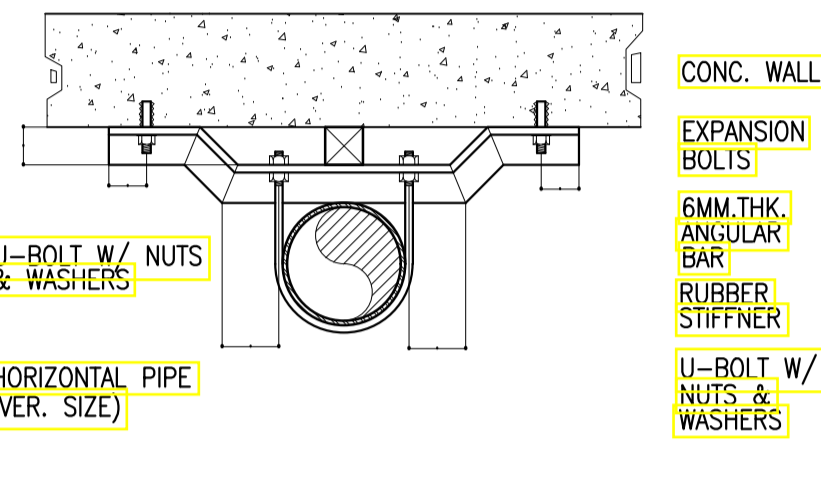
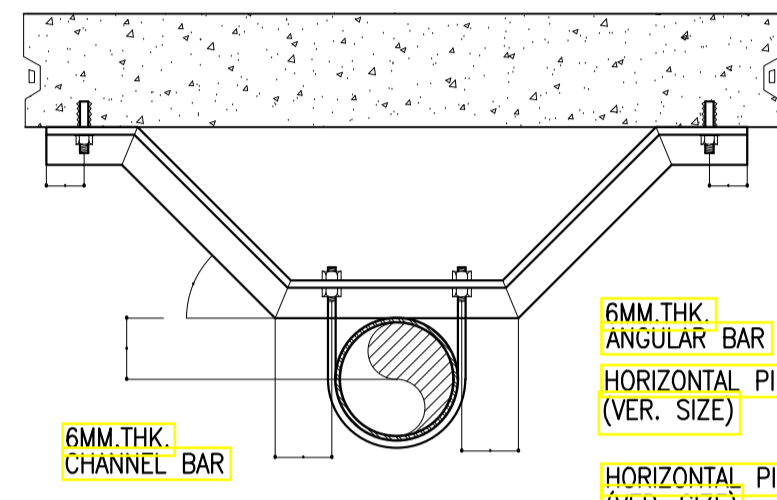
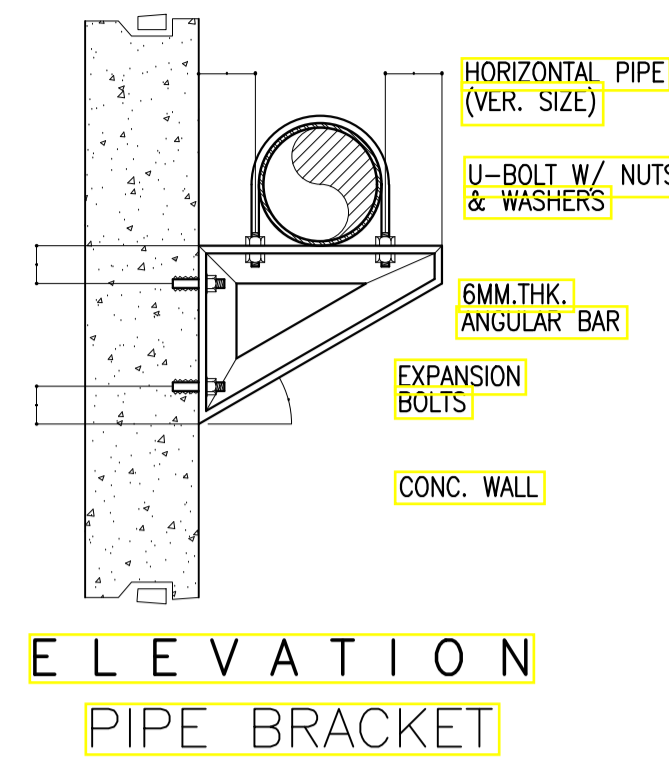
MISCELLANEOUS DETAILS  
SHEET 3 OF 4

SHEET NO:

**FP  
07 08**

**SCHEDULE OF PIPE BRACKET/BRACING**

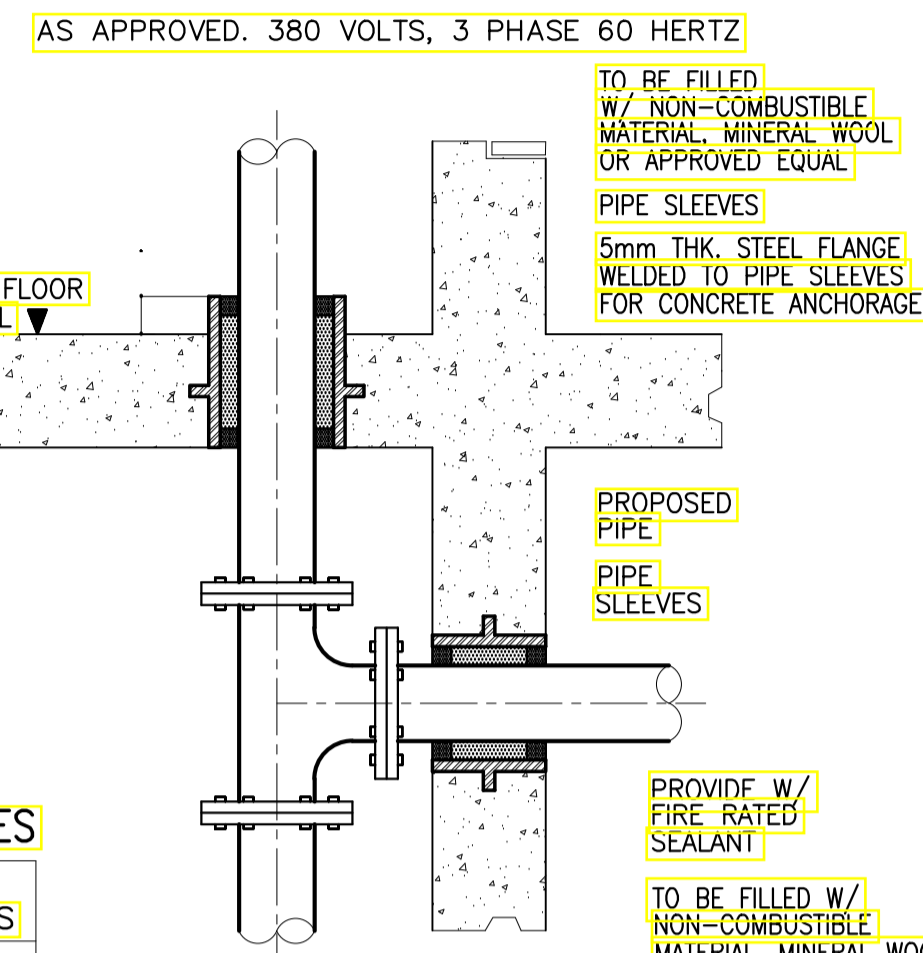
PIPE SIZE	U-BOLT DIA.	ANGLE BAR	EXPANSION BOLT
50	10	50 X 50	10
65	10	50 X 50	10
75	10	50 X 50	10
100	12	65 X 65	12



**1** **DETAIL OF SWAY BRACINGS**  
FP-08 NOT TO SCALE

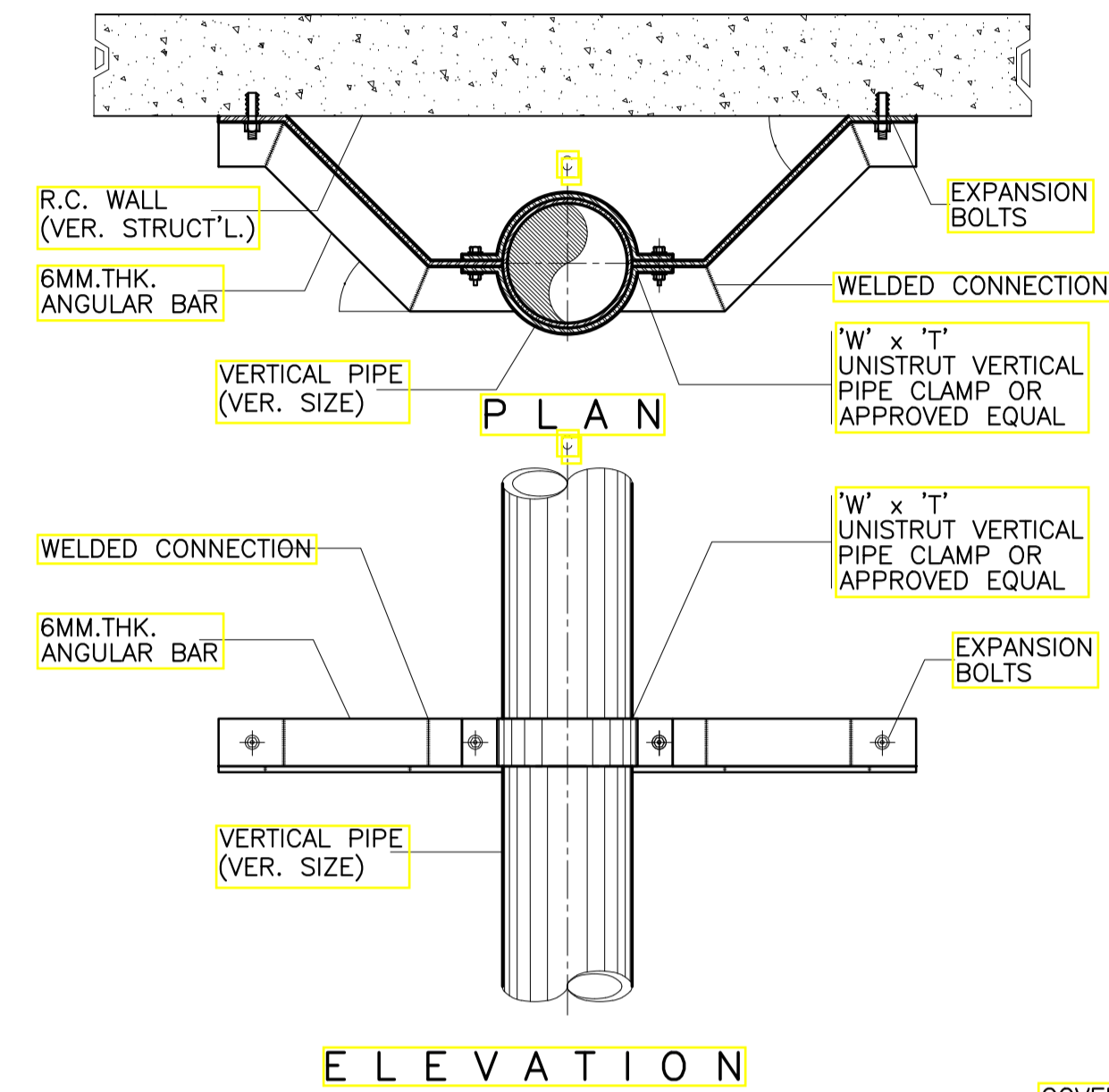
**SCHEDULE OF PIPE SLEEVES**

SIZE OF BRANCHLINES	SIZE OF PIPE SLEEVES
25MMØ	50MMØ
32MMØ	50MMØ
40MMØ	65MMØ
50MMØ	75MMØ
65MMØ	100MMØ
75MMØ	100MMØ
100MMØ	150MMØ
150MMØ	225MMØ
200MMØ	300MMØ

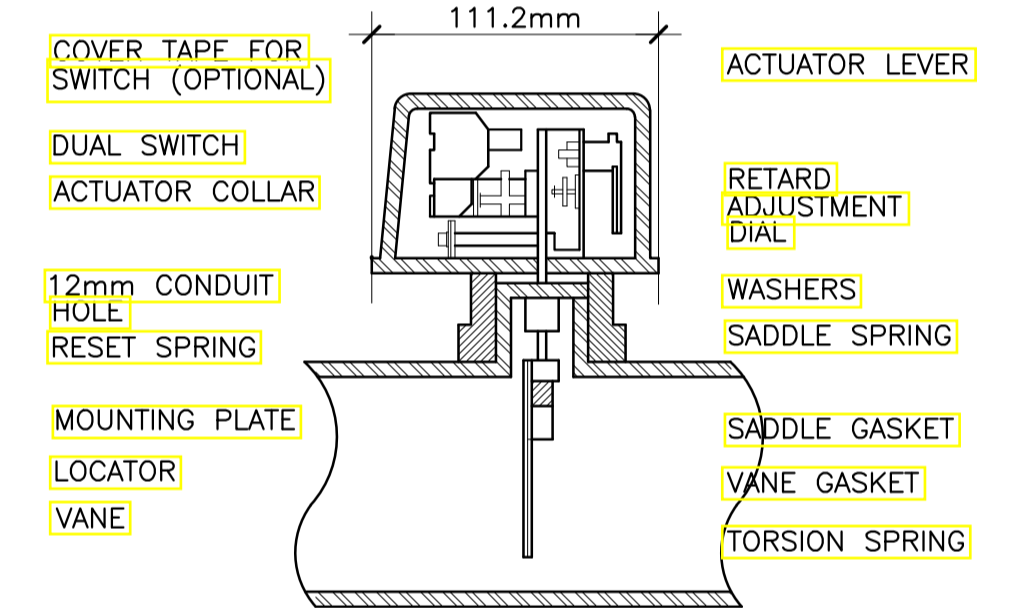
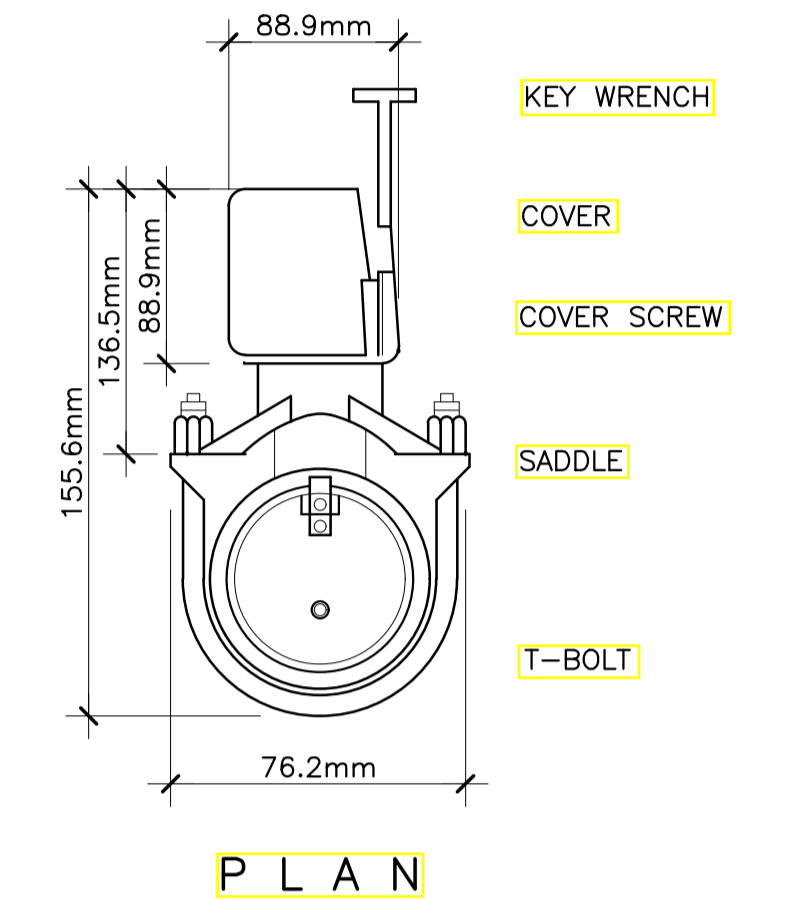


**NOTES :**  
SLEEVES SHALL BE PROVIDED AROUND ALL PIPING EXTENDING THROUGH WALLS, FLOORS, PLATFORMS AND FOUNDATIONS.  
1. THE CLEARANCE BETWEEN THE PIPE SLEEVES SHALL BE FILLED W/NON-COMBUSTIBLE FLEXIBLE MATERIAL SUCH AS MINERAL WOOL, FIBERGLASS OR EQUIVALENT.  
2. MINIMUM CLEARANCE BETWEEN PIPE AND SLEEVES SHALL NOT BE LESS THAN 25MM FOR PIPE 25MM THROUGH .75MM & 40MM FOR PIPE SIZE 100MM AND LARGER FLOOR SLEEVES SHALL BE EXTENDED AT LEAST 75MM ABOVE THE TOP OF THE WEARING SURFACE.

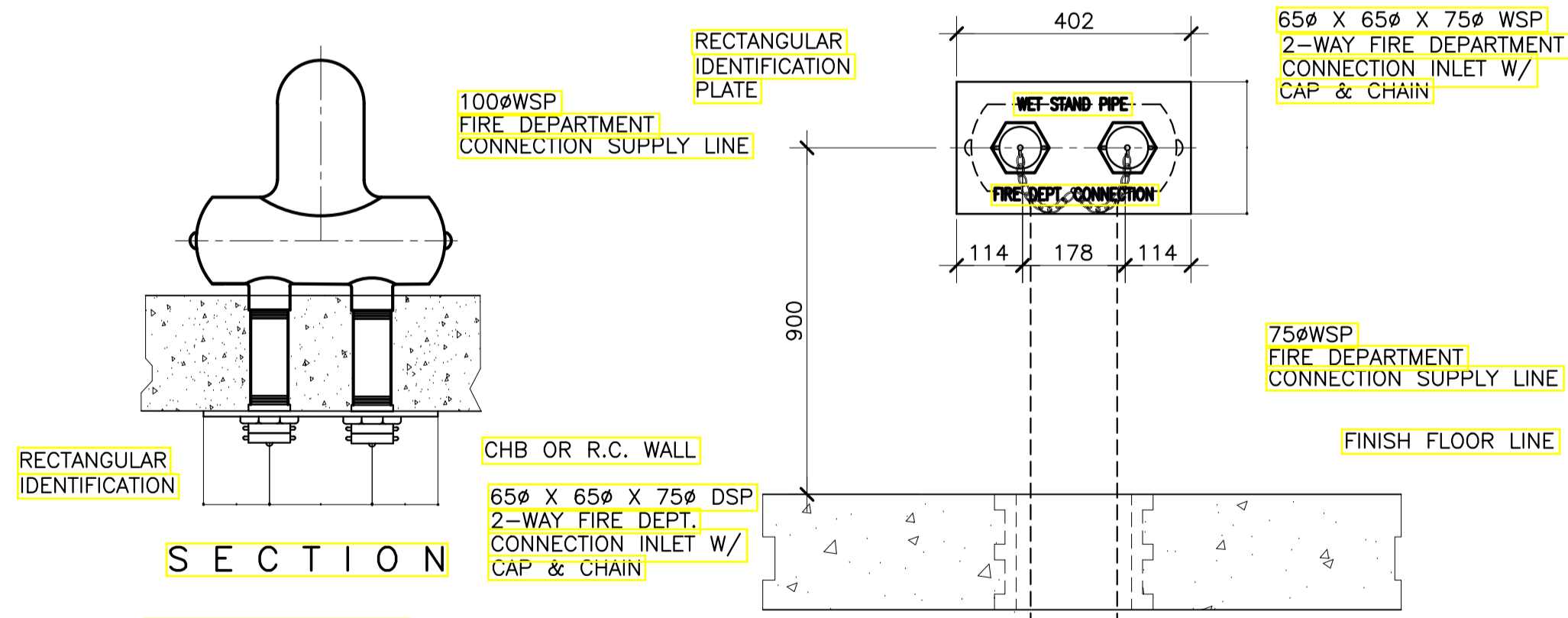
**3** **DETAIL OF PIPE SLEEVE**  
FP-09 NOT TO SCALE



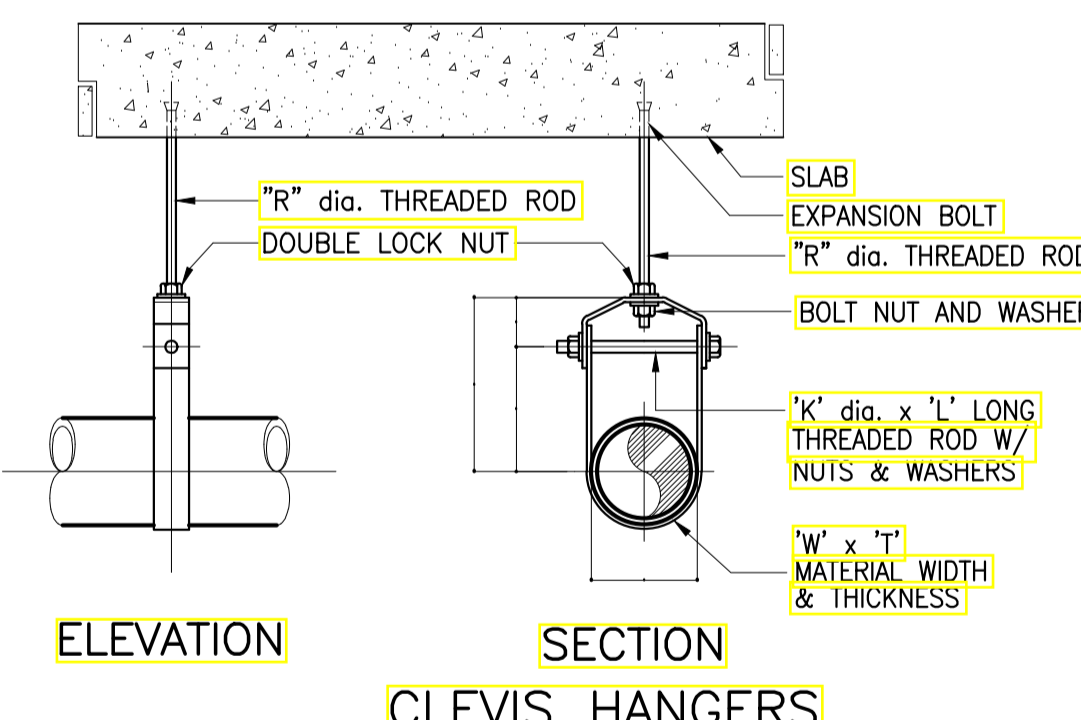
**4** **DETAIL OF RISER SWAY BRACE**  
FP-08 NOT TO SCALE



**6** **DETAIL OF WATER FLOW SWITCH**  
FP-08 NOT TO SCALE



**2** **DETAIL OF 2-WAY FIRE DEP'T. INLET**  
FP-08 NOT TO SCALE



**TABLE OF DIMENSIONS IN MM**

PIPE SIZE	ROD DIA. "D" (MM)	B	C	A MAX.	W x T	K x L
50	9.65	111.12	143	69.30	25 x 3	M10 x 85
75	12.7	105.0	165.1	30.23	40 x 6	M12 x 115
100	15.9	133.35	40	33.27	40 x 6	M12 x 130
150	19.1	176.12	267	50.00	40 x 6	M16 x 190

**5** **DETAIL OF PIPE HANGER**  
FP-08 NOT TO SCALE